



ENTRE//MATIC

CE

OBBI

IP1639EN - rev. 2010-09-17



EN

**Installation and
maintenance manual for
swing gates.**
(Original instructions)



ISO 9001
Cert. n° 0957

DITEC S.p.A.

Via Mons. Banfi, 3 - 21042 Caronno Pertusella (VA) - ITALY

Tel. +39 02 963911 - Fax +39 02 9650314

www.ditec.it - ditec@ditecva.com

INDEX

Subject	Page
1. General safety precautions	3
2. Declaration of incorporation of partly completed machinery	4
2.1 Machinery Directive	4
3. Technical specifications	5
3.1 Operating instructions	5
4. Standard installation	6
4.1 Geared motor references	7
5. Installation	8
5.1 Preliminary checks	8
5.2 Geared motor installation	8
6. Electrical connections	11
6.1 OBBI3BFCH limit switch adjustment	12
7. Ordinary maintenance program	13
8. User instructions	14
8.1 General safety precautions	14
8.2 Manual release instruction	15

All rights reserved

All data and specifications have been drawn up and checked with the greatest care. The manufacturer cannot however take any responsibility for eventual errors, omissions or incomplete data due to technical or illustrative purposes.

1. GENERAL SAFETY PRECAUTIONS



This installation manual is intended for professionally competent personnel only.

Installation, electrical connections and adjustments must be performed in accordance with Good Working Methods and in compliance with applicable regulations.

Before installing the product, carefully read the instructions.

Bad installation could be hazardous.

The packaging materials (plastic, polystyrene, etc.) should not be discarded in the environment or left within reach of children, as these are a potential source of hazard.

Before installing the product, make sure it is in perfect condition.

Do not install the product in an explosive environment and atmosphere: gas or inflammable fumes are a serious hazard risk.

Before installing the motors, make all structural changes relating to safety clearances and protection or segregation of all areas where there is risk of being crushed, cut or dragged, and danger areas in general.

Make sure the existing structure is up to standard in terms of strength and stability.

The motor manufacturer is not responsible for failure to use Good Working Methods in building the frames to be motorized or for any deformation occurring during use.

The safety devices (photocells, safety edges, emergency stops, etc.) must be installed taking into account: applicable laws and directives, Good Working Methods, installation premises, system operating logic and the forces developed by the motorized gate.

The safety devices must protect any areas where the risk exists of being crushed, cut or dragged, or where there are any other risks generated by the motorized gate.

Apply hazard area notices required by applicable regulations.

Each installation must clearly show the identification details of the motorized gate.

Before making power connections, make sure the plate details correspond to those of the power mains.



Fit an omnipolar disconnection switch with a contact opening gap of at least 3 mm.

Make sure an adequate residual current circuit breaker and overcurrent cutout are fitted upstream of the electrical system.

When necessary, connect the motorized gate to a reliable earth system made in accordance with applicable safety regulations.

During installation, maintenance and repair, interrupt the power supply before opening the lid to access the electrical parts.

To handle electronic parts, wear earthed antistatic conductive bracelets.

The motor manufacturer declines all responsibility in the event of component parts being fitted that are not compatible with the safe and correct operation.



For repairs or replacements of products only original spare parts must be used.

The installer shall provide all information relating to automatic, manual and emergency operation of the motorized gate, and provide the user with operating instructions.

2. DECLARATION OF INCORPORATION OF PARTLY COMPLETED MACHINERY

(Directive 2006/42/EC, Annex II-B)

The manufacturer DITEC S.p.A. with headquarters in Via Mons. Banfi, 3 - 21042 Caronno Pertusella (VA) - ITALY declares that the automation system for OBBI swing gates:

- has been constructed to be installed on a manual door to construct a machine pursuant to the Directive 2006/42/EC. The manufacturer of the motorized door shall declare conformity pursuant to the Directive 2006/42/EC (annex II-A), prior to the machine being put into service;
- conforms to applicable essential safety requirements indicated in annex I, chapter 1 of the Directive 2006/42/EC;
- conforms to the Low Voltage Directive 2006/95/EC;
- conforms to the Electromagnetic Compatibility Directive 2004/108/EC;
- technical documentation conforms to Annex VII-B to the Directive 2006/42/EC;
- technical documentation is managed by Renato Calza with offices in Via Mons. Banfi, 3 - 21042 Caronno Pertusella (VA) - ITALY;
- a copy of technical documentation will be provided to national competent authorities, following a suitably justified request.

Caronno Pertusella, 30-08-2010



Silvano Angaroni
(Managing Director)

2.1 Machinery Directive

Pursuant to Machinery Directive (2006/42/EC) the installer who motorizes a door or gate has the same obligations as the manufacturer of machinery and as such must:

- prepare the technical file which must contain the documents indicated in Annex V of the Machinery Directive; (The technical file must be kept and placed at the disposal of competent national authorities for at least ten years from the date of manufacture of the motorized door);
- draw up the EC Declaration of Conformity in accordance with Annex II-A of the Machinery Directive and deliver it to the customer;
- affix the EC marking on the motorized door in accordance with point 1.7.3 of Annex I of the Machinery Directive.

3. TECHNICAL DATA

	OBBI3BH	OBBI3BFCH
Power supply	24 V=	24 V=
Absorption	3 A	3 A
Thrust	1500 N	1500 N
Max run	350 mm	350 mm
Opening time	25 s / 90°	25 s / 90°
Limit switch	-	Magnetic limit switch
Service class	3 - FREQUENT	3 - FREQUENT
Intermittence	S2 = 30 min S3 = 50%	S2 = 30 min S3 = 50%
Temperature	-20 °C/+55 °C	-20 °C/+55 °C
Degree of protection	IP54	IP54
Control panel	E2HOB	E2HOB
Applications m = leaf width kg = leaf weight  Recommended dimensions  Limit dimensions		

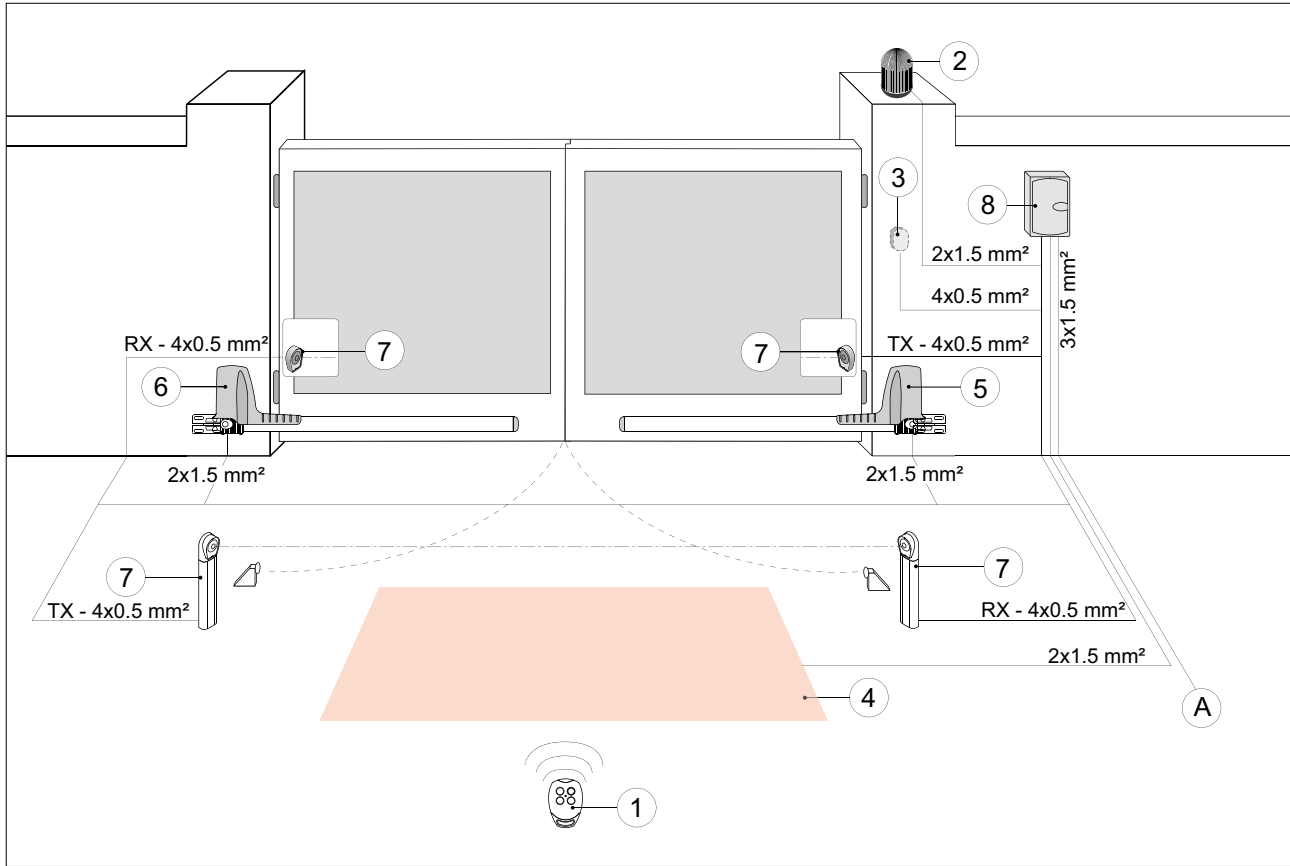
3.1 Operating instructions

Service life: 3 (minimum 10÷5 years of working life with 30÷60 cycles a day)

Applications: FREQUENT (For vehicle or pedestrian accesses to town houses or small condominiums with frequent use).

- Performance characteristics are to be understood as referring to the recommended weight (approx. 2/3 of maximum permissible weight). When used with the maximum permissible weight a reduction in the above mentioned performance can be expected.
- Service class, running times, and the number of consecutive cycles are to be taken as merely indicative Having been statistically determined under average operating conditions, and are therefore not necessarily applicable to specific conditions of use.
- Each automatic entrance has variable elements such as: friction, balancing and environmental factors, all of which may substantially alter the performance characteristics of the automatic entrance or curtail its working life or parts thereof (including the automatic devices themselves). The installer should adopt suitable safety conditions for each particular installation.

4. STANDARD INSTALLATION

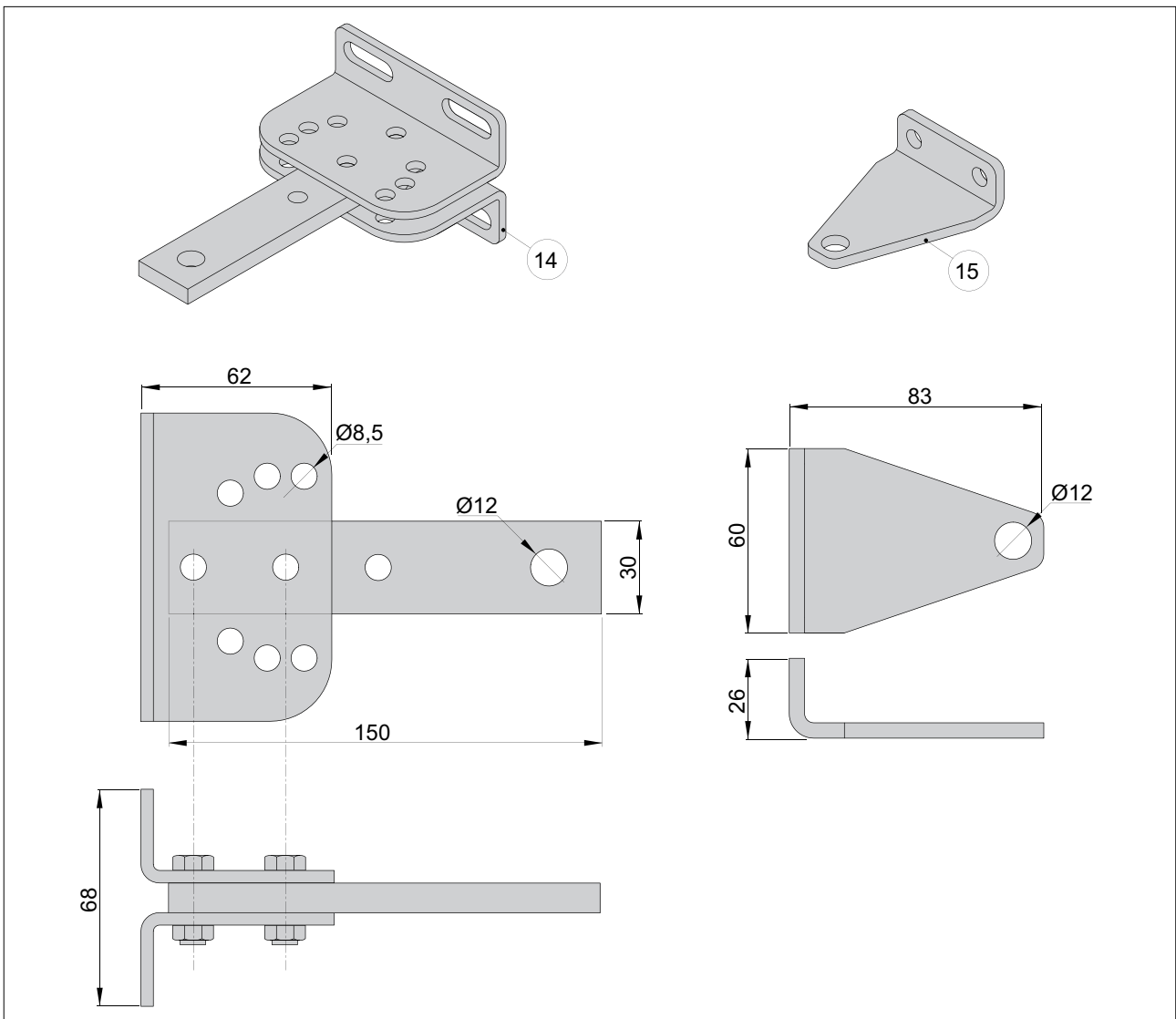
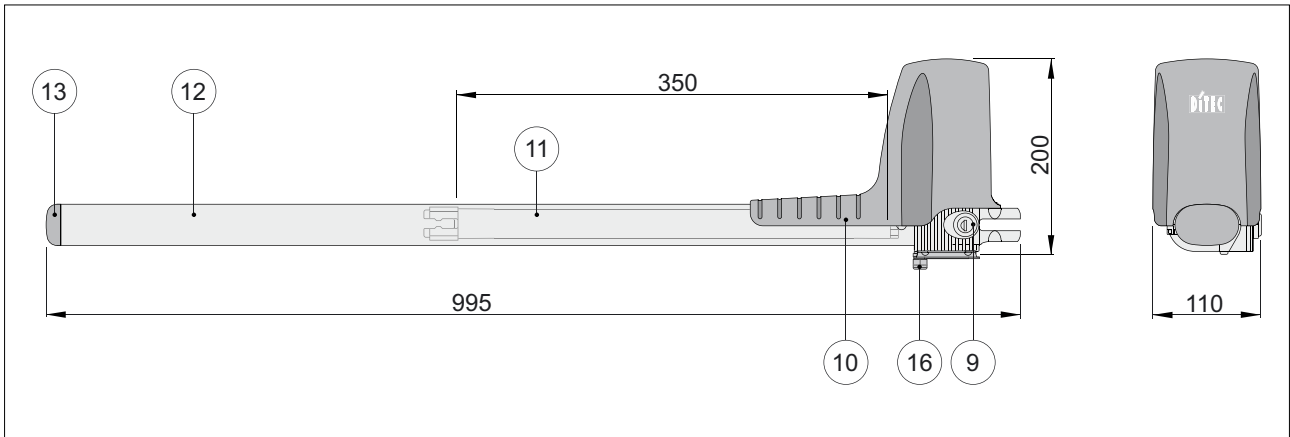


Ref.	Code	Description
1	GOL4	Transmitter
2	LAMPH	Flashing light
3	XEL5	Key selector
	GOL4M	Codified via radio control keyboard
4	LAB9	Magnetic loop detection device for traffic monitoring
5	OBBI3BH	Right geared motor
	OBBI3BFCH	Right geared motor with limit switch
6	OBBI3BH	Left geared motor
	OBBI3BFCH	Left geared motor with limit switch
7	XEL2	Photocells
	LAB4	Photocells IP55
8	E2HOB	Control panel
A		Connect the power supply to an approved omnipolar switch with an opening distance of the contacts of at least 3mm (not supplied). The connection to the mains must be made via an independent channel, separated from the connections to command and safety devices.



NOTE: the given operating and performance features can only be guaranteed with the use of DITEC accessories and safety devices.

4.1. Geared motor references



Ref.	Code	Description
9		Key release
10		Casing
11		Draft tube
12		Tube cover
13		Closing plug
14		Tail bracket
15		Head bracket
16		Cable guide sheat hooking bracket

5. INSTALLATION

Unless otherwise specified, all measurements are expressed in millimetres (mm).

5.1 Preliminary checks

Check that the structure is sufficiently rugged and that the hinge pivots are properly lubricated. Provide an opening and closing stop.

5.2 Geared motor installation

Check the installation measurements on the basis of the distance between the hinge of the door wing and the corner of the pillar [C] and of the desired opening angle [D].

The installation measurements indicated in the table allow you to choose the values of [A] and [B] on the basis of the desired opening angle and in relation to the on site spaces and overall dimensions.

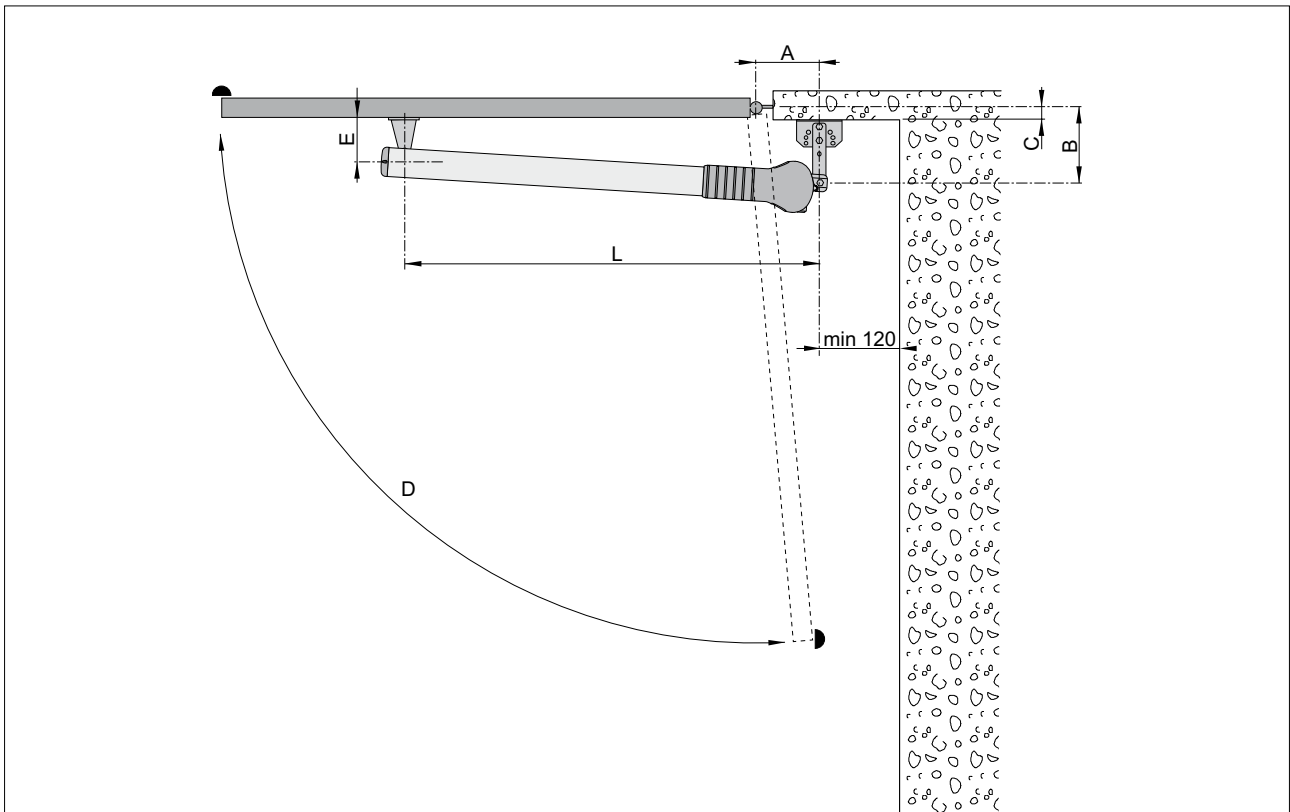
NOTE: The measurements [A] and [B] must be the same, in order to have a regular movement.

Increasing [A] decreases the coming up speed during opening.

Increasing [B] decreases the coming up speed during closing and improves burglar-proofing.

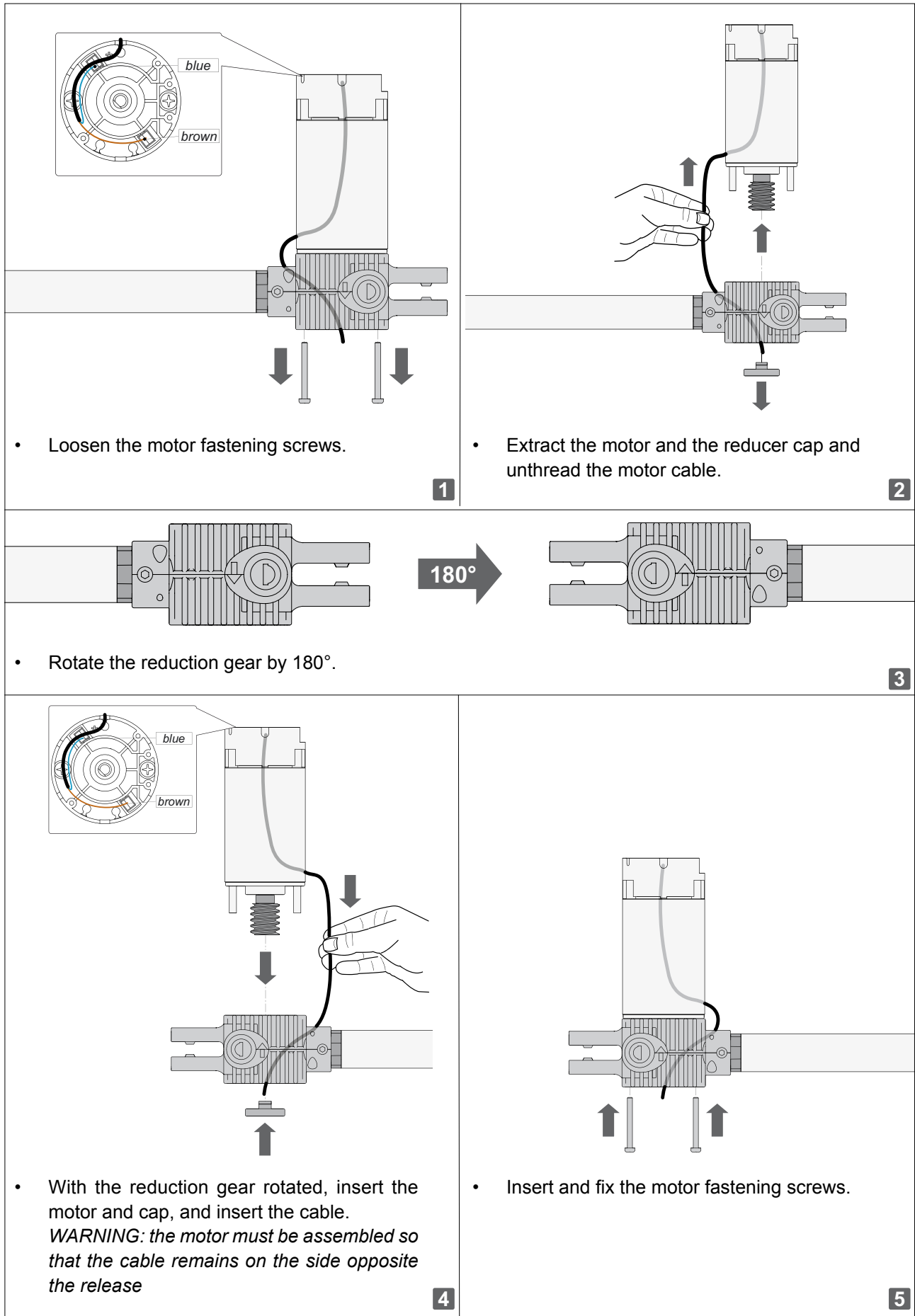
Reducing [B] increases the extent of gate opening.

Measurements [A] and [B] must in any case be compatible with the useful travel of the piston so that; if [A] is increased, [B] must be decreased and vice versa.

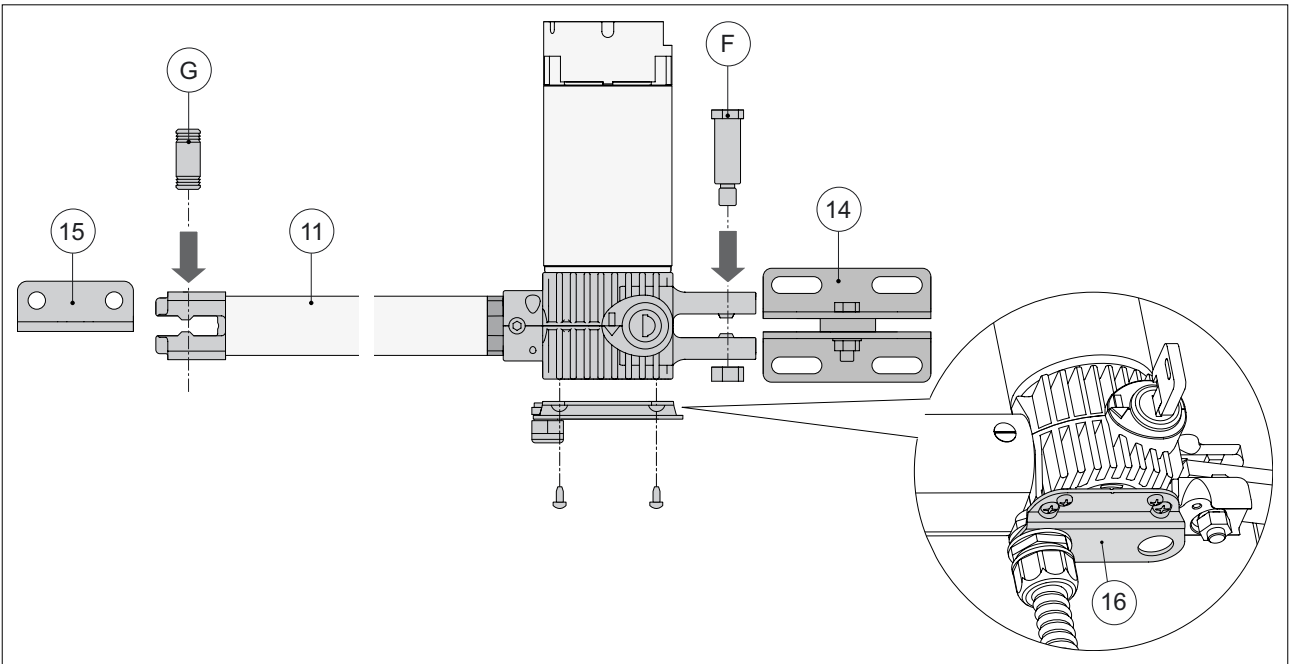


A	B	C max	D max	E	L
150	150	85	100°	75	910
120	160	95	100°		
120	180	115	100°		
160	120	55	110°		

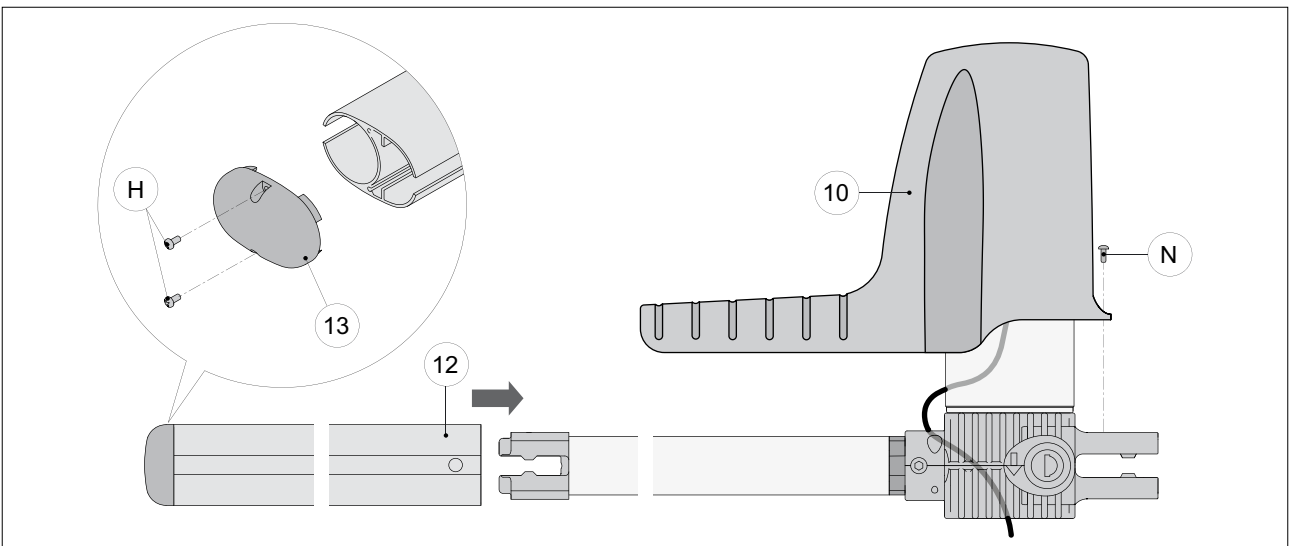
- If the gearmotor opening direction needs to be modified, proceed as shown in the figure (example of motor transformation with opening direction from right to left).



- Fix the tail bracket [14], respecting measurements [A] and [B] on the basis of the desired opening angle [D].
On the tail bracket there are holes that facilitate the assembly operation.
- Fix the piston to the rear bracket [14] with the pin [F] supplied.
- Extend the haulage tube completely [11] to its maximum length, then shorten it by approximately 20 mm.
WARNING: the stops must keep a 10 mm margin of tube stroke, in both the door wing closed and door wing open positions.
- With the gate completely closed, position the front bracket [15], check it is aligned with the rear bracket and fix it to the gate.
- Fix the piston to the front bracket with the pin [G] supplied. To work correctly, the gearmotors must be assembled with the motor casing at the top.
- Unblock the gearmotor and check (moving the gate manually) the entire stroke is free of interference. Slightly lubricate the front and rear articulated joints.



- Assemble the tube cover [12] with the cap [13] and seal, and fix it with the screws [H] supplied.
Pay attention to the insertion direction. The slits on the closing cap [13] must be on the lower part in order to help the water to come out.
- Assemble the casing [10], fixing it with the screw [N], paying attention to the positioning of the cable.

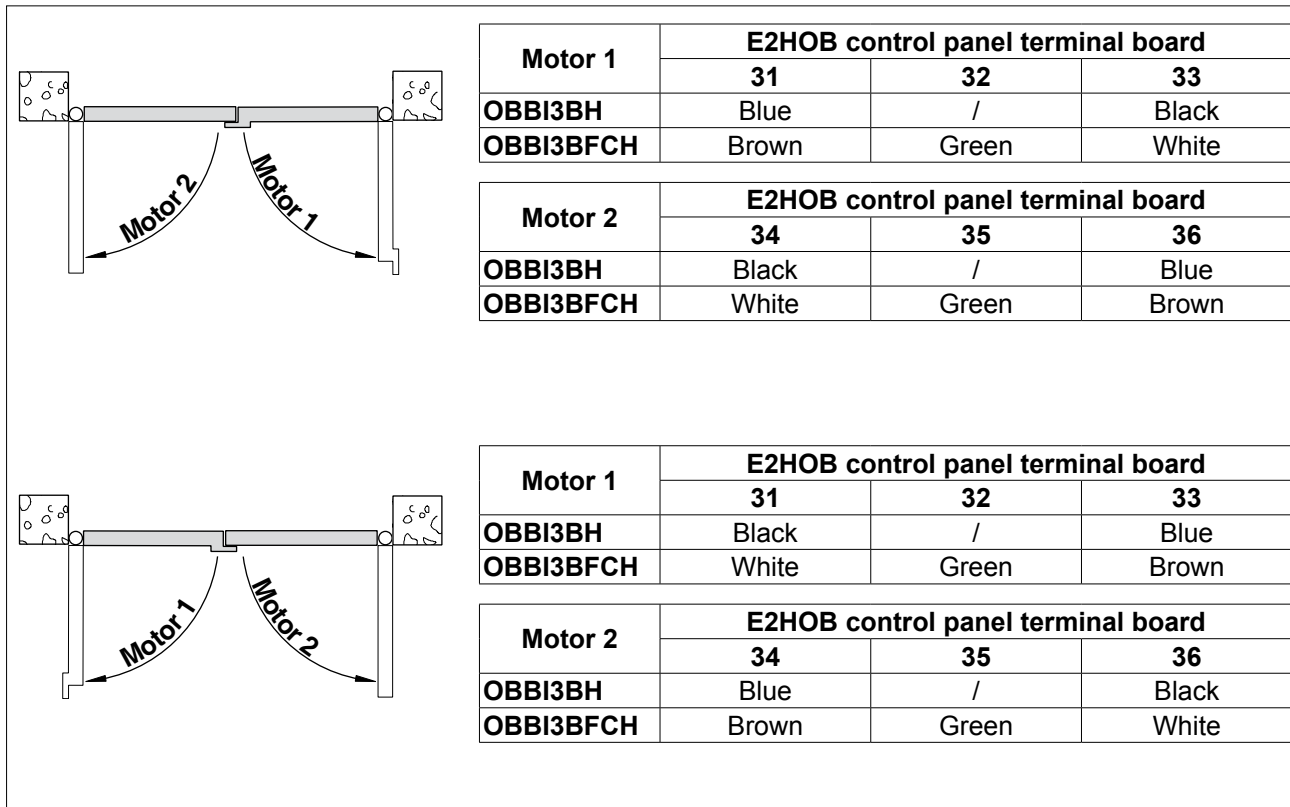


6. ELECTRICAL CONNECTIONS

Before connecting the power supply, make sure the plate data correspond to that of the mains power supply. An omnipolar disconnection switch with minimum contact gaps of 3 mm must be included in the mains supply. Check that upstream of the electrical installation there is an adequate residual current circuit breaker and a suitable overcurrent cutout.

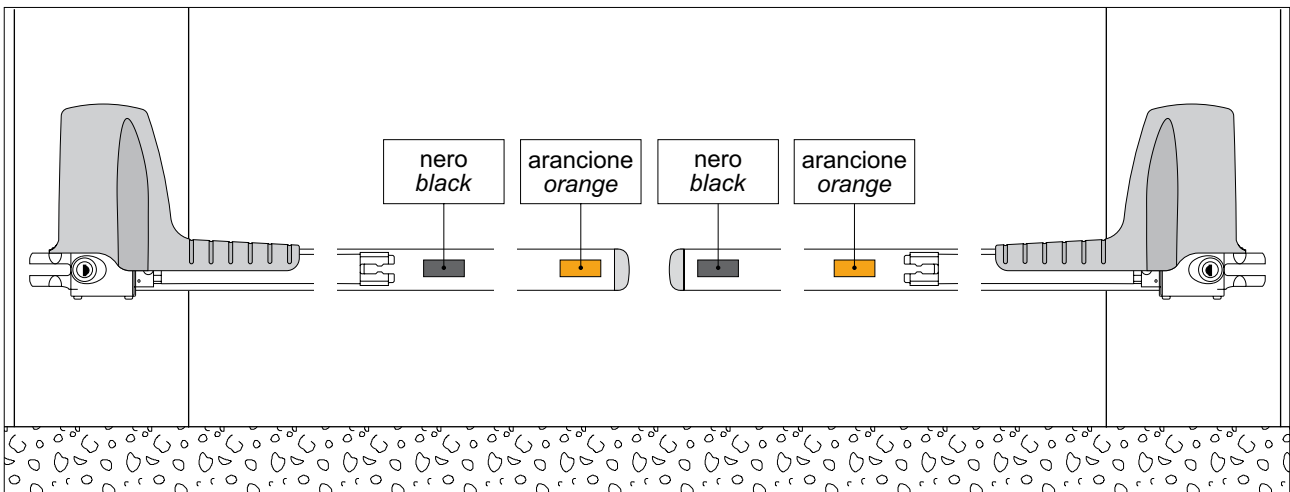
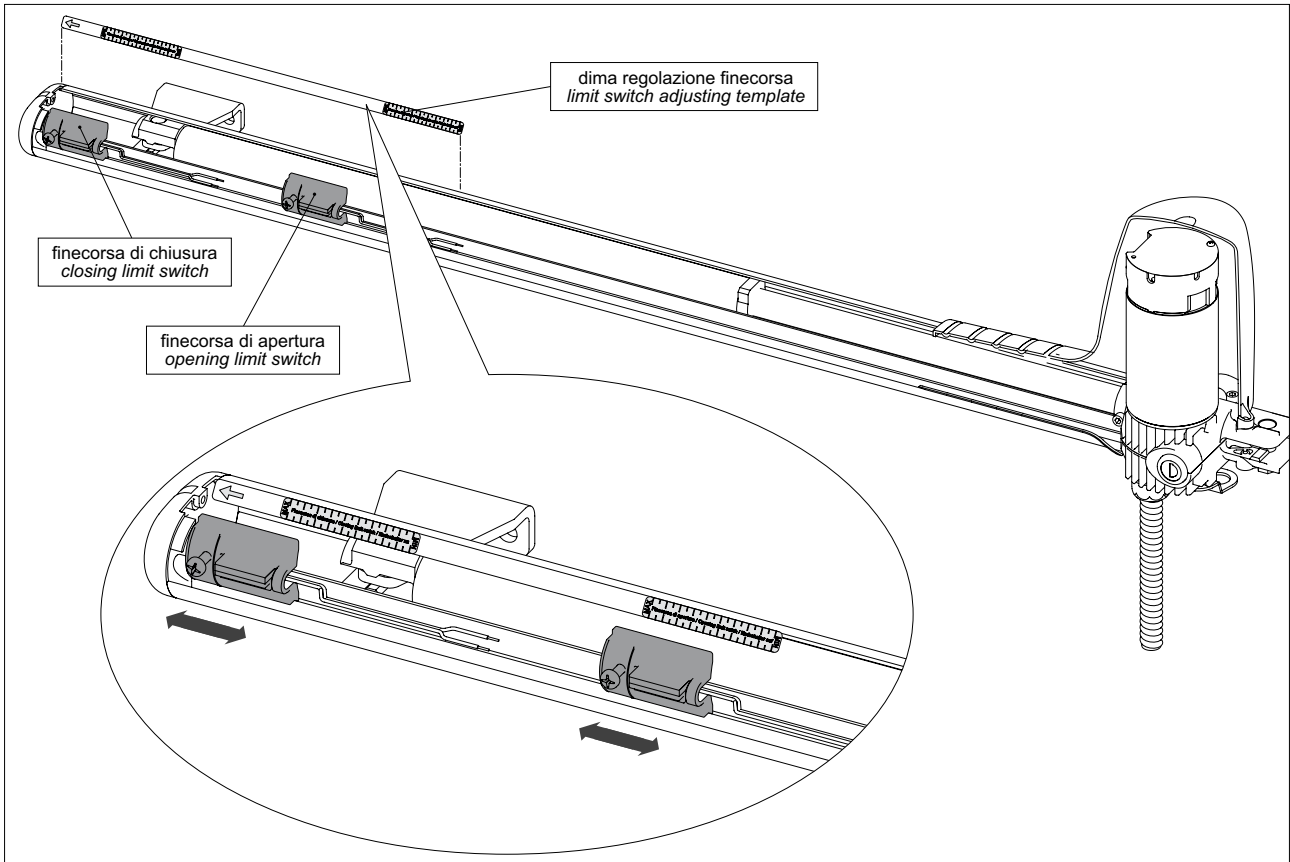
The gearmotors OBB13BH-OBB13BFCH can be connected to the E2HOB control panel.

The electrical wiring and the start-up of the gearmotors OBB13BH and OBB13BFCH are shown in figure and in the installation manuals of the E2H control panel.



6.1 OBBI3BFCH limit switch adjustment

The OBBI3BFCH geared motor is fitted with magnetic limit switches. Adjust the limit switches in order to obtain the correct opening and closing of the automation, as indicated in figure.



7. ROUTINE MAINTENANCE PLAN

Perform the following operations and checks every 6 months according to intensity of use of the automation.

Disconnect the 230 V~ power supply and batteries if present:

- Clean and lubricate, using neutral grease, the turning pins, the hinges of the gate and the drive screw
- Check that fastening points are properly tightened.
- Check the electrical wiring is in good condition.

Reconnect the 230 V~ power supply and batteries if present:

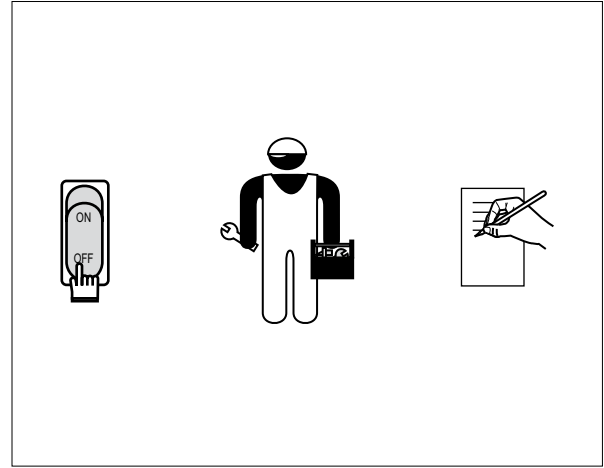
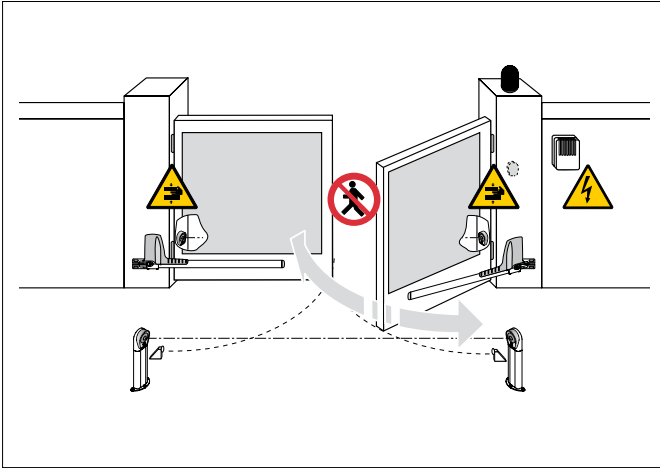
- Check the power adjustments.
- Check the good operation of all command and safety functions (photocells).
- Check the good operation of the release.
- If the E2HOB control panel is mounted, check for battery continuity by powering off and performing several manoeuvres in sequence. Upon test completion, power back on (230 V~).



WARNING: For spare parts, see the spares price list.



8. OPERATING INSTRUCTIONS



8.1 General safety precautions

The following precautions are an integral and essential part of the product and must be supplied to the user. Read them carefully since they contain important information on safe installation, use and maintenance. These instructions must be kept and forwarded to all possible future users of the system.

This product must only be used for the specific purpose for which it was designed.

Any other use is to be considered improper and therefore dangerous.

The manufacturer cannot be held responsible for any damage caused by improper, incorrect or unreasonable use.

Avoid operating in the proximity of the hinges or moving mechanical parts.

Do not enter within the operating range of the motorized door while it is moving.

Do not block the movement of the motorized door since this may be dangerous.

Do not allow children to play or stay within the operating range of the motorized door.

Keep remote controls and/or any other control devices out of the reach of children in order to avoid possible involuntary activation of the motorized door.

In the event of fault or malfunctioning of the product, turn off the power supply switch, do not attempt to repair or intervene directly and contact only professionally competent personnel.


Failure to comply with the above may cause a dangerous situation.

All cleaning, maintenance or repair work must be carried out by professionally competent personnel.

To ensure that the system works efficiently and correctly, the manufacturer's indications must be complied with and routine maintenance of the motorized door must be performed by professionally competent personnel.

In particular, regular checks are recommended in order to verify that the safety devices are operating correctly.

All installation, maintenance and repair work must be documented and made available to the user.

 For the correct disposal of electric and electronic equipment, waste batteries and accumulators, the user must take such products to the designated municipal collection facilities.



8.2 Manual release instructions

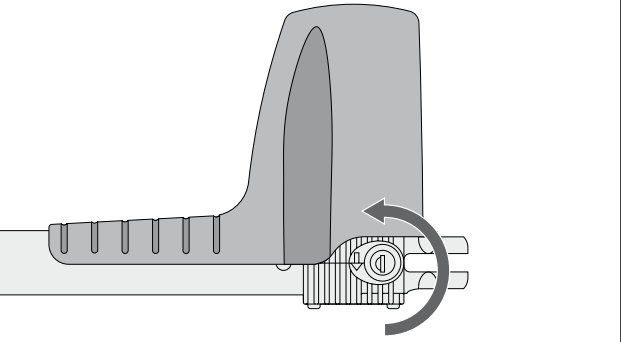
In the event of a fault or blackout, release any electric lock, insert the key and turn it anticlockwise (in the direction indicated by the arrow on the gearmotor). Manually open the gate.

To block the door wings again, turn the key clockwise (in the opposite direction to the arrow on the gearmotor). To facilitate the operation, move the door wing slightly.

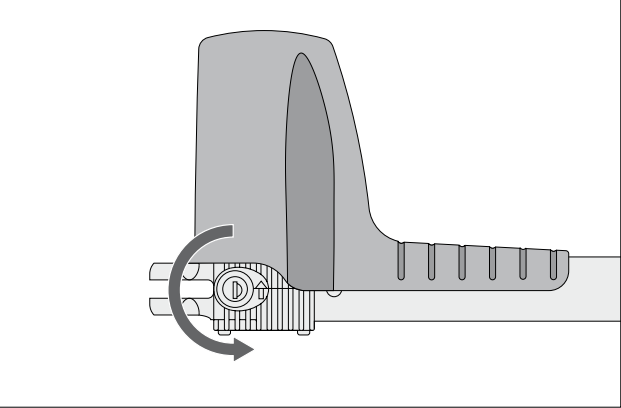


WARNING: the door wing block and release operations must be performed with the motor idle.

RIGHT PISTON



LEFT PISTON



DITEC S.p.A.
Via Mons. Banfi, 3
21042 Caronno Pertusella (VA) - ITALY
Tel. +39 02 963911 - Fax +39 02 9650314
www.ditec.it - ditec@ditecva.com

Installer:



DITEC S.p.A. Via Mons. Banfi, 3 21042 Caronno P.Ia (VA) Italy Tel. +39 02 963911 Fax +39 02 9650314
www.ditec.it ditec@ditecva.com

DITEC BELGIUM LOKEREN Tel. +32 9 3560051 Fax +32 9 3560052 www.ditecbelgium.be **DITEC DEUTSCHLAND** OBERURSEL
Tel. +49 6171 914150 Fax +49 6171 9141555 www.ditec-germany.de **DITEC ESPAÑA** ARENYS DE MAR Tel. +34 937958399
Fax +34 937959026 www.ditecespana.com **DITEC FRANCE** MASSY Tel. +33 1 64532860 Fax +33 1 64532861 www.ditecfrance.com
DITEC GOLD PORTA ERMESINDE-PORTUGAL Tel. +351 22 9773520 Fax +351 22 9773528/38 www.goldporta.com **DITEC SVIZZERA**
BALERNA Tel. +41 848 558855 Fax +41 91 6466127 www.ditecswiss.ch **DITEC ENTREMATIC NORDIC** LANDSKRONA-SWEDEN
Tel. +46 418 514 50 Fax +46 418 511 63 www.ditecentrematicnordic.com **DITEC TURCHIA** ISTANBUL Tel. +90 21 28757850
Fax +90 21 28757798 www.ditec.com.tr **DITEC AMERICA** ORLANDO-FLORIDA-USA Tel. +1 407 8880699 Fax +1 407 8882237
www.ditecamerica.com **DITEC CHINA** SHANGHAI Tel. +86 21 62363861/2 Fax +86 21 62363863 www.ditec.cn