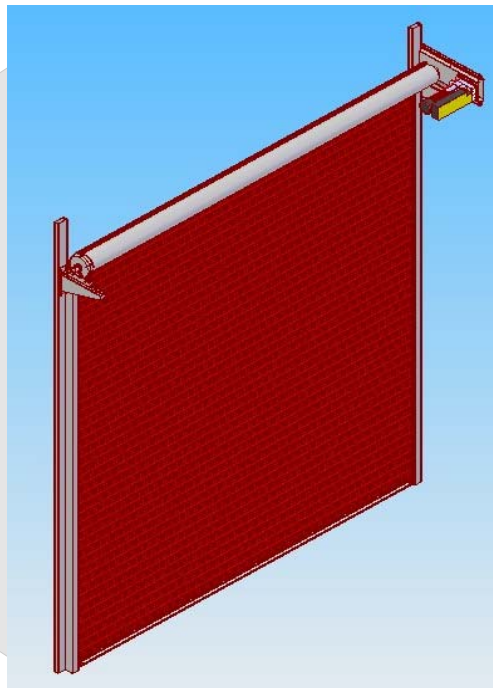
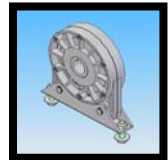
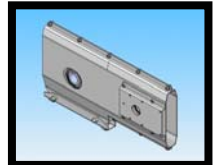
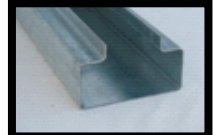
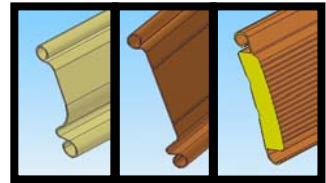




## LIST OF ELEMENTS OF ROLLING SHUTTERS



### INDUSTRIAL USE

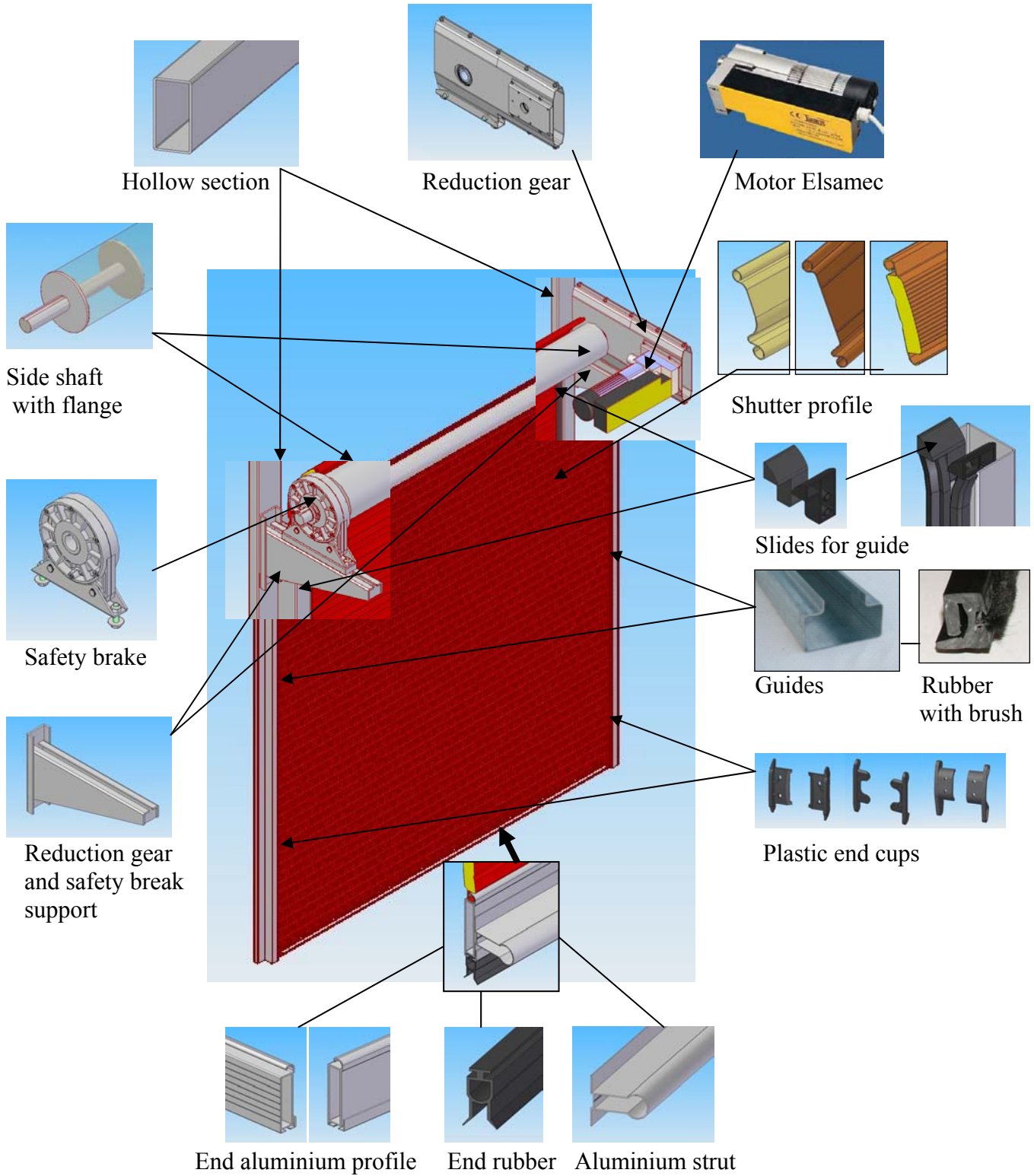


### RESIDENTIAL USE



January 2009

# INDUSTRIAL ROLLING SHUTTER



# RESIDENTIAL ROLLING SHUTTER



**CONTENTS:**

<b>1. SHEET-METAL PROFILE ANTINTEBESTA</b>			
<b>ART. CODE</b>	<b>INVOICE CODE</b>	<b>DESCRIPTION</b>	<b>Page</b>
A8G	71.320.00.00041	PROFILE ANTINTEBESTA 0,8mm GALVANIZE	1.1
A10G	71.320.00.00043	PROFILE ANTINTEBESTA 1mm GALVANIZE	1.1
A8GP	71.320.00.00046	PROFILE ANTINTEBESTA 0,8mm GALVANIZE PERFORATED	1.1
A10GP	71.320.00.00048	PROFILE ANTINTEBESTA 1mm GALVANIZE PERFORATED	1.1
A8P	71.320.00.00053	PROFILE ANTINTEBESTA 0,8mm DYED	1.1
A10P	71.320.00.00055	PROFILE ANTINTEBESTA 1mm DYED	1.1
A8PP	71.320.00.00058	PROFILE ANTINTEBESTA 0,8mm DYED PERFORATED	1.1
A10PP	71.320.00.00060	PROFILE ANTINTEBESTA 1mm DYED PERFORATED	1.1

<b>2. SHEET-METAL PROFILE PASTORE</b>			
<b>ART. CODE</b>	<b>INVOICE CODE</b>	<b>DESCRIPTION</b>	<b>Page</b>
P8G	71.320.00.00003	PROFILE PASTORE 0,8mm GALVANIZE	2.1
P10G	71.320.00.00005	PROFILE PASTORE 1mm GALVANIZE	2.1
P8GP	71.320.00.00008	PROFILE PASTORE 0,8mm GALVANIZE PERFORATED	2.1
P10GP	71.320.00.00010	PROFILE PASTORE 1mm GALVANIZE PERFORATED	2.1
P8GW	71.320.00.00015	PROFILE PASTORE 0,8mm GALVANIZE WITH WINDOWS 130X70	2.1
P10GW	71.320.00.00017	PROFILE PASTORE 1mm GALVANIZE WITH WINDOWS 130X70	2.1
P8P	71.320.00.00022	PROFILE PASTORE 0,8mm DYED	2.1
P10P	71.320.00.00024	PROFILE PASTORE 1mm DYED	2.1
P8PP	71.320.00.00027	PROFILE PASTORE 0,8mm DYED PERFORATED	2.2
P10PP	71.320.00.00029	PROFILE PASTORE 1mm DYED PERFORATED	2.2
P8PW	71.320.00.00034	PROFILE PASTORE 0,8mm DYED WITH WINDOWS 130X70	2.2
P10PW	71.320.00.00036	PROFILE PASTORE 1mm DYED WITH WINDOWS 130X70	2.2
W13070	24.800.13.00029	POLYCARBONATE WINDOW FOR PASTORE 130X70 mm	2.2

<b>3. DOUBLE PROFILE WITH INSULATION</b>			
<b>ART. CODE</b>	<b>INVOICE CODE</b>	<b>DESCRIPTION</b>	<b>Page</b>
CB1RAL...	71.320.00.00082	DOUBLE SHEET-METAL PROFILE WITH POLYURETHANE INSULATION 90x20 (GALVANIZE SHEET-METAL PLASTICIZATION RAL TINTS : 1013, 3000, 5010, 6005, 735DU, 8017,9002, 9016)	3.1
CB1WD..	71.320.00.00084	DOUBLE SHEET-METAL PROFILE WITH POLYURETHANE INSULATION 90x20 (GALVANIZE SHEET-METAL PLASTICIZATION WOOD IMITATION LIGHT OR DARK)	3.1
CB2RAL...	71.320.00.00073	DOUBLE ALUMINIUM PROFILE WITH POLYURETHANE INSULATION 90x20 (ALUMINIUM SHEET DYED IN RAL TINTS : 1013, 3000, 5010, 6005, 735DU, 8017,9002, 9016)	3.1
CB2WD..	71.320.00.00074	DOUBLE ALUMINIUM PROFILE WITH POLYURETHANE INSULATION 90x20 (ALUMINIUM SHEET PLASTICIZATION WOOD IMITATION LIGHT OR DARK)	3.2

<b>4. ALUMINIUM PROFILE</b>			
<b>ART. CODE</b>	<b>INVOICE CODE</b>	<b>DESCRIPTION</b>	<b>Page</b>
ES1N	24.700.70.00041	ALUMINIUM PROFILE Natural	4.1
ES1P	24.700.70.00055	ALUMINIUM PROFILE White	4.1
ES1A	24.700.70.00043	ALUMINIUM PROFILE Anodize	4.1
ES1NW	71.320.00.00067	ALUMINIUM PROFILE Natural (With holes for windows)	4.1
ES1PW	71.320.00.00068	ALUMINIUM PROFILE White (With holes for windows)	4.1
ES1AW	71.320.00.00069	ALUMINIUM PROFILE Anodize (With holes for windows)	4.1
W15060	24.800.13.00028	POLYCARBONATE WINDOW FOR ALUMINIUM PROFILE 150X60 cm	4.1
G4N	24.700.70.00044	END ALUMINIUM PROFILE Natural	4.1
G4P	24.700.70.00051	END ALUMINIUM PROFILE Black	4.1
G4A	24.700.70.00046	END ALUMINIUM PROFILE Anodize	4.1
G3N	24.700.70.00005	ALUMINIUM STRUT Natural	4.2
G3P	24.700.70.00006	ALUMINIUM STRUT White	4.2
G3A	24.700.70.00007	ALUMINIUM STRUT Anodize	4.2
355016	24.700.70.00056	END ALUMINIUM PROFILE WITH SOCKET FOR RUBBER AND STRUT	4.2
355015	24.700.70.00054	ALUMINIUM STRUT (NEW)	4.2

<b>5. RETICULAR ROLES</b>			
<b>ART. CODE</b>	<b>INVOICE CODE</b>	<b>DESCRIPTION</b>	<b>Page</b>
NBG	71.300.12.00004	RETICULAR ROLE THIN GALVANIZE " Big eye " (170 X 115 mm)	5.1
NSG	71.300.12.00002	RETICULAR ROLE DENSE GALVANIZE " Small eye " (70 X 45 mm)	5.1
NBP	71.300.12.00003	RETICULAR ROLE THIN DYED " Big eye " (170 X 115 mm)	5.1
NSP	71.300.12.00001	RETICULAR ROLE DENSE DYED " Small eye " (70 X 45 mm)	5.1

<b>6. SHAFTS</b>			
<b>ART. CODE</b>	<b>INVOICE CODE</b>	<b>DESCRIPTION</b>	<b>Page</b>
BB-60	24.700.40.00034	SHAFT $\Phi$ 60X2,5	6.1
BB-76	24.700.40.00037	SHAFT $\Phi$ 76X3	6.1
BB-159	24.700.40.00178	SHAFT $\Phi$ 159	6.1
BB-169	24.700.40.00179	SHAFT $\Phi$ 169	6.1
BB-192	24.700.40.00180	SHAFT $\Phi$ 192	6.1
BB-202	24.700.40.00181	SHAFT $\Phi$ 202	6.1
BB-40-159	71.800.15.00001	SIDE SHAFT WITH FLANGE $\Phi$ 159	6.1
BB-40-169	71.800.15.00002	SIDE SHAFT WITH FLANGE $\Phi$ 169	6.1
BB-40-192	71.800.15.00003	SIDE SHAFT WITH FLANGE $\Phi$ 192	6.1
BB-40-202	71.800.15.00004	SIDE SHAFT WITH FLANGE $\Phi$ 202	6.1

<b>7. SPRINGS-SPRING BOXES</b>			
<b>ART. CODE</b>	<b>INVOICE CODE</b>	<b>DESCRIPTION</b>	<b>Page</b>
SP6014	24.700.61.00006	SPRING 60X1,4	7.1
SP5514	24.700.61.00005	SPRING 55X1,4	7.1
SP5014	24.700.61.00004	SPRING 50X1,4	7.1
SP4514	24.700.61.00003	SPRING 45X1,4	7.1
SP4014	24.700.61.00002	SPRING 40X1,4	7.1
SP4012	24.700.61.00001	SPRING 40X1,2	7.1
SPB200E	24.700.20.00006	SPRING BOX $\Phi$ 200 – SIMPLE	7.1
SPB220N	24.700.20.00017	SPRING BOX $\Phi$ 220 – NAYLON	7.1
SPB220S	24.700.20.00009	SPRING BOX $\Phi$ 220 – SOLID	7.1
SPB240S	24.700.20.00010	SPRING BOX $\Phi$ 240 – SOLID	7.1

<b>8. GUIDES-FLAGS</b>			
<b>ART. CODE</b>	<b>INVOICE CODE</b>	<b>DESCRIPTION</b>	<b>Page</b>
G40SG	71.800.50.00001	GUIDE 40 mm SIMPLE GALVANIZE	8.1
G60SG	71.800.50.00003	GUIDE 60 mm SIMPLE GALVANIZE	8.1
G60G	71.800.50.00005	GUIDE 86X60 Thickness 1,5 mm GALVANIZE	8.1
G80G	71.800.50.00007	GUIDE 86X80 Thickness 2,0 mm GALVANIZE	8.1
G100G	71.800.50.00009	GUIDE 86X100 Thickness 2,0 mm GALVANIZE	8.1
G120G	71.800.50.00028	GUIDE 86X120 Thickness 2,0 mm GALVANIZE	8.1
G70NG	71.800.50.00011	GUIDE NEW 80X70 Thickness 1,5 mm GALVANIZE	8.1
G110NG	71.800.50.00031	GUIDE NEW 80X110 Thickness 1,5 mm GALVANIZE	8.1
G40SP	71.800.50.00002	GUIDE 40 mm SIMPLE DYED	8.1
G60SP	71.800.50.00004	GUIDE 60 mm SIMPLE DYED	8.1
G60P	71.800.50.00006	GUIDE 86X60 Thickness 1,5 mm DYED	8.1
G80P	71.800.50.00008	GUIDE 86X80 Thickness 2,0 mm DYED	8.1
G100P	71.800.50.00010	GUIDE 86X100 Thickness 2,0 mm DYED	8.1
G120P	71.800.50.00026	GUIDE 86X120 Thickness 2,0 mm DYED	8.1
G70NP	71.800.50.00012	GUIDE NEW 80X70 Thickness 1,5 mm DYED	8.2
G110NP	71.800.50.00032	GUIDE NEW 80X110 Thickness 1,5 mm DYED	8.2
FL35G	71.800.50.00018	FLAG 350X350X3 GALVANIZE	8.2
FL40G	71.800.50.00020	FLAG 400X400X3 GALVANIZE	8.2
FL45G	71.800.50.00022	FLAG 450X450X3 GALVANIZE	8.2
FL40GIND	71.800.50.00023	FLAG INDUSTRIAL 400X400X3 GALVANIZE	8.2
FL45GIND	71.800.50.00024	FLAG INDUSTRIAL 450X450X3 GALVANIZE	8.2
FL50GIND	71.800.50.00025	FLAG INDUSTRIAL 500X500X3 GALVANIZE	8.2

<b>9. RUBBERS-PLASTIC</b>			
ART. CODE	INVOICE CODE	DESCRIPTION	Page
TR376	24.800.40.00019	END RUBBER FOR RESIDENTIAL ROLE	9.1
TR708	24.800.40.00020	END RUBBER FOR INDUSTRIAL ROLE	9.1
SPZ1	24.800.40.00021	RUBBER WITH BRUSH	9.1
G0007	24.800.40.00002	RUBBER OF NEW GUIDE WITH BRUSH	9.1
IN11	24.800.13.00034	SLIDES FOR GUIDE	9.1
TL12A	24.800.13.00030	PLASTIC END CUPS FOR ANTINTEBESTA	9.1
TL12P	24.800.13.00031	PLASTIC END CUPS FOR PASTORE	9.2
TL12D	24.800.13.00032	PLASTIC END CUPS FOR DOUBLE WITH INSULATION	9.2
FR16	24.800.13.00033	PLASTIC STOP	9.2
MSP32	24.800.13.00010	HANDLE FOR PASTORE	9.2
MSP33	24.800.13.00009	HANDLE	9.2
RB200	24.700.20.00011	PLASTIC RING FOR SPRING BOX $\Phi$ 200	9.3
RB220	24.700.20.00012	PLASTIC RING FOR SPRING BOX $\Phi$ 220	9.3
RB240	24.700.20.00013	PLASTIC RING FOR SPRING BOX $\Phi$ 240	9.3

<b>10. SUPPORT-GALVANIZE ELEMENTS-LOCKS</b>			
ART. CODE	INVOICE CODE	DESCRIPTION	Page
SUPR15	24.800.13.00005	REDUCTION SUPPORT 1:5	10.1
SUPR17	24.800.13.00006	REDUCTION SUPPORT 1:7	10.1
SUPS	71.800.13.00024	SHAFT SUPPORT $\Phi$ 60- $\Phi$ 75	10.1
BEIN	24.800.13.00016	REGULAR STRAP FOR ANTINTEBESTA AND PASTORE	10.1
BEOUT	24.800.13.00017	REVERSE STRAP FOR ANTINTEBESTA AND PASTORE	10.1
ANG40G	71.700.70.00001	ANGLE STRUT FOR ANTINTEBESTA AND PASTORE	10.1
SIDLCK	24.800.13.00011	SIDELONG LOCK	10.2

<b>11. REDUCTIONS –SAFETY BRAKES-CHAIN HOIST</b>			
ART. CODE	INVOICE CODE	DESCRIPTION	Page
REDU15	20.800.13.00021	REDUCTION 1:5	11.1
REDU17	20.800.13.00022	REDUCTION 1:7	11.1
SDM7A	24.800.13.00001	SAFETY BREAK GAPOSA M7A	11.1
SDF5	24.800.13.00004	SAFETY BREAK ELSAMEC F5	11.1
724ELS	24.800.12.00114	CHAIN HOIST FOR ELSAMEC	11.2
723AELS	24.800.12.00139	CHAIN FOR CHAIN HOIST	11.2
MELS	24.800.13.00014	CRANK OF MOTOR ELSAMEC	11.2

<b>12 MOTORS</b>			
ART. CODE	INVOICE CODE	DESCRIPTION	Page
M22SEACM	20.100.10.00016	MOTOR TITAN 220SE ACM	12.1
M24EACM	20.100.10.00008	MOTOR TITAN 240E ACM	12.1
M24BMACM	20.100.10.00007	MOTOR TITAN 240BM ACM	12.1
M22SOMFI	20.100.10.00001	MOTOR SOMFI	12.1
M22CEM	20.100.10.00019	MOTOR CEM 220	12.1
M24CEM	20.100.10.00020	MOTOR CEM 240	12.2
M24BMCEM	20.100.10.00021	MOTOR CEM 240BM	12.2
MT6ELS	20.100.11.00004	MOTOR ELSAMEC 1-PHASE	12.2
MT12ELS	20.100.11.00005	MOTOR ELSAMEC 3-PHASE	12.2

<b>13. BOXES</b>			
<b>ART. CODE</b>	<b>INVOICE CODE</b>	<b>DESCRIPTION</b>	<b>Page</b>
MIRR	71.800.70.00001	MIRROR	13.1
MIRFR	71.800.70.00002	FRAME	13.1
MIRWD	71.800.70.00002	COVER FRAME (WOOD IMITATION)	13.1

<b>14. SCREWS - NUTS</b>			
<b>ART. CODE</b>	<b>INVOICE CODE</b>	<b>DESCRIPTION</b>	<b>Page</b>
11211B	25.800.30.00093	FLAT HEAD GALVANIZE BOLT M12X110 FOR SHAFT	14.1
11010B	25.800.30.00030	FLAT HEAD GALVANIZE BOLT M10X100 FOR SHAFT $\Phi$ 60	14.1
11012B	25.800.30.00105	FLAT HEAD GALVANIZE BOLT M10X120 FOR SHAFT $\Phi$ 75	14.1
11003B	25.800.30.00029	FLAT HEAD GALVANIZE BOLT M10X25 DIN603 FIXING SUPPORT	14.1
1062B	25.800.30.00019	FLAT HEAD GALVANIZE BOLT M6X16 FOR STRUT	14.1
1062BL	25.800.30.00100	FLAT HEAD BOLT M6X16 FOR HANDLE	14.1
1063B	25.800.30.00023	FLAT HEAD GALVANIZE BOLT M6X25 FOR LOCK & STOP	14.1
1065B	25.800.30.00024	FLAT HEAD GALVANIZE BOLT M6X50 FOR RETICULAR STOP 60X30	14.1
1066B	25.800.30.00025	FLAT HEAD GALVANIZE BOLT M6X60 FOR RETICULAR STOP 80X40	14.1
1085B	25.800.30.00011	ALLEN BOLT M8X50 FOR DOUBLE WITH INSULATION HANDLE	14.1
1100M	25.800.30.00055	NUT M10X1,5 GALVANIZE	14.1
1060M	25.800.30.00052	NUT M6X1,0 GALVANIZE	14.1
1100RW	25.800.30.00076	WASHER M10 DIN9021 GALVANIZE	14.1
1120R	25.800.30.00078	WASHER M12 DIN125 GALVANIZE	14.1
412PR	25.800.30.00081	RIVET 4X12 FOR ANTINTEBESTA & PASTORE PLASTIC END CUPS	14.1

<b>15. CONTROL PANELS</b>			
<b>ART. CODE</b>	<b>INVOICE CODE</b>	<b>DESCRIPTION</b>	<b>Page</b>
EASY-RI	20.200.10.00033	CONTROL UNIT ROLLING CODE V2 EASY	15.1
DREAM	20.200.10.00024	CONTROL UNIT BENINCA DREAM	15.1
CU-ELS	20.200.10.00030	CONTROL UNIT 3-PHASE MOTOR ELSAMEC	15.1
CU-TR	20.200.10.00048	CONTROL UNIT FOR REMOTE CONTROLLED INDUSTRIAL MOTORS	15.1
SCE	24.800.10.00011	CONTROL UNIT FOR SAFETY EDGE IN CONDUCTIVE	15.1

<b>16. TRANSMITTERS -SWITCHES-ANTENNA</b>			
<b>ART. CODE</b>	<b>INVOICE CODE</b>	<b>DESCRIPTION</b>	<b>Page</b>
TRR4/43	20.200.11.00002	4 CHANNELS ROLLING-CODE TRANSMITTER V2	16.1
TRR2/43	20.200.11.00003	2 CHANNELS TRANSMITTER V2	16.1
SWKEY	20.200.12.00004	EXTERNAL METAL SWITCH WITH KEY ACM/BIOROL	16.1
SWNOR3	20.200.12.00001	SIMPLE SWITCH NORATEX	16.1
RELBOX	24.800.13.00015	RELEASE BOX ACM & GAPOSA	16.2
V2ANS	20.200.16.00001	ANTENNA V2	16.2

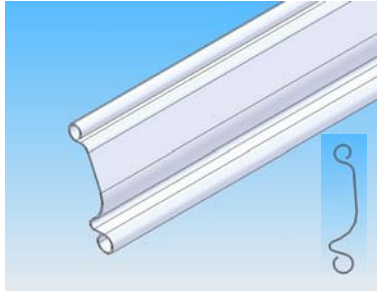
<b>17. PHOTOCELLS- SAFETY EDGES</b>			
<b>ART. CODE</b>	<b>INVOICE CODE</b>	<b>DESCRIPTION</b>	<b>Page</b>
V2DFN	20.200.14.00002	PHOTOCELLS V2	17.1
FPM1	20.200.14.00011	SYSTEM MOVED PHOTOCELLS	17.1
SCP35	24.800.40.00026	PNEUMATIC SAFETY EDGE	17.1
SCPP	24.800.10.00012	PRESSURE SWITCH FOR PNEUMATIC SAFETY EDGE	17.1
SCRES	24.800.40.00024	SAFETY EDGE IN CONDUCTIVE	17.2

<b>18. HOLLOW SECTION - ANGLES</b>			
<b>ART. CODE</b>	<b>INVOICE CODE</b>	<b>DESCRIPTION</b>	<b>Page</b>
G30-30-2	24.700.40.00079	HOLLOW SECTION 30X30X2 GALVANIZE	18.1
G40-40-2	24.700.40.00084	HOLLOW SECTION 40X40X2 GALVANIZE	18.1
G50-50-2	24.700.40.00086	HOLLOW SECTION 50X50X2 GALVANIZE	18.1
G60-40-2	24.700.40.00090	HOLLOW SECTION 60X40X2 GALVANIZE	18.1
G60-50-3	24.700.40.00089	HOLLOW SECTION 60X50X3 GALVANIZE	18.1
G60-60-2	24.700.40.00092	HOLLOW SECTION 60X60X2 GALVANIZE	18.1
G60-60-3	24.700.40.00093	HOLLOW SECTION 60X60X3 GALVANIZE	18.1
G80-40-2	24.700.40.00097	HOLLOW SECTION 80X40X2 GALVANIZE	18.1
G80-40-3	24.700.40.00098	HOLLOW SECTION 80X40X3 GALVANIZE	18.1
G100-40-2	24.700.40.00102	HOLLOW SECTION 100X40X2 GALVANIZE	18.1
G100-40-3	24.700.40.00103	HOLLOW SECTION 100X40X3 GALVANIZE	18.1
G100-60-3	24.700.40.00105	HOLLOW SECTION 100X60X3 GALVANIZE	18.1
G120-40-2	24.700.40.00109	HOLLOW SECTION 120X40X2 GALVANIZE	18.1
G120-60-3	24.700.40.00110	HOLLOW SECTION 120X60X3 GALVANIZE	18.1
ANG40G	71.700.70.00001	ANGLE 40X40X2,5 GALVANIZE	18.1
ANG40GP	71.700.70.00003	ANGLE 40X40X2,5 GALVANIZE PERFORATED	18.1

# 1 SHEET-METAL PROFILE ANTINTEBESTA

## PROFILE ANTINTEBESTA GALVANIZE

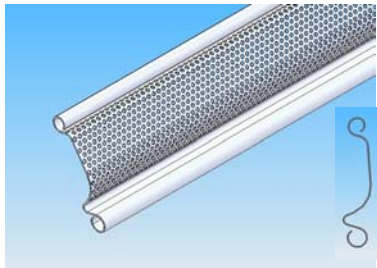
Art. Code	Invoice Code
A8G	71.320.00.00041
A10G	71.320.00.00043



Curved profile by galvanized sheet metal  
 Profile step: 71 mm  
 Thickness: 0,8 1,0 mm  
 Weight: 0,85 0,92 Kg/m  
 Max. length : until 10 m

## PROFILE ANTINTEBESTA GALVANIZE PERFORATED

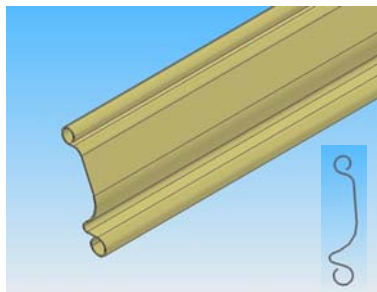
Art. Code	Invoice Code
A8GP	71.320.00.00046
A10GP	71.320.00.00048



Curved profile by galvanized perforated sheet metal  
 Profile step: 71 mm  
 Thickness: 0,8 1,0 mm  
 Weight: 0,67 0,84 Kg/m  
 Max. length : until 10 m

## PROFILE ANTINTEBESTA DYED

Art. Code	Invoice Code
A8P	71.320.00.00053
A10P	71.320.00.00055

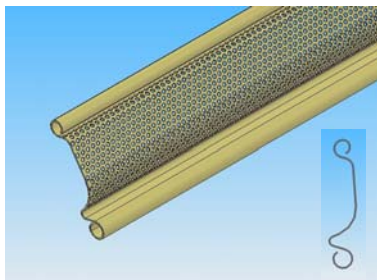


Curved profile by galvanized sheet metal,  
 electrostatic dyed  
 Profile step: 71 mm  
 Thickness: 0,8 1,0 mm  
 Weight: 0,85 0,92 Kg/m  
 Max. length : until 10 m  
 Electrostatic dye RAL tints:

RAL 1013	RAL 3000	RAL 5010	RAL 6005
RAL 735D	RAL 8017	RAL 9002	RAL 9016

## PROFILE ANTINTEBESTA DYED PERFORATED

Art. Code	Invoice Code
A8PP	71.320.00.00058
A10PP	71.320.00.00060



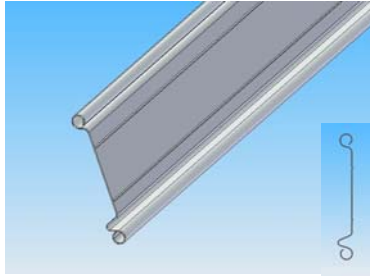
Curved profile by galvanized perforated sheet metal,  
 electrostatic dyed  
 Profile step: 71 mm  
 Thickness: 0,8 1,0 mm  
 Weight: 0,67 0,84 Kg/m  
 Max. length : until 10 m  
 Electrostatic dye RAL tints:

RAL 1013	RAL 3000	RAL 5010	RAL 6005
RAL 735D	RAL 8017	RAL 9002	RAL 9016

## 2 SHEET-METAL PROFILE PASTORE

### PROFILE PASTORE GALVANIZE

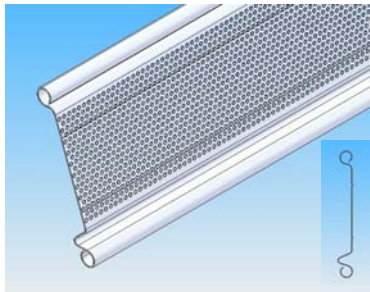
Art. Code	Invoice Code
P8G	71.320.00.00003
P10G	71.320.00.00005



Linear profile by galvanized sheet metal  
 Profile step: 110 mm  
 Thickness: 0,8 1,0 mm  
 Weight: 1,15 1,44 Kg/m  
 Max. length : until 10 m

### PROFILE PASTORE GALVANIZE PERFORATED

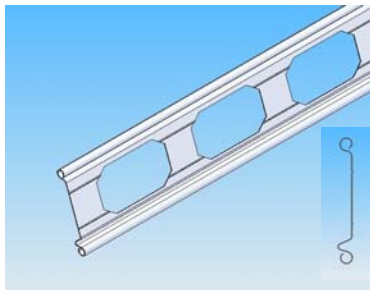
Art. Code	Invoice Code
P8GP	71.320.00.00008
P10GP	71.320.00.00010



Linear profile by galvanized perforated sheet metal  
 Profile step: 110 mm  
 Thickness: 0,8 1,0 mm  
 Weight: 0,99 1,22 Kg/m  
 Max. length : until 10 m

### PROFILE PASTORE GALVANIZE WITH WINDOWS

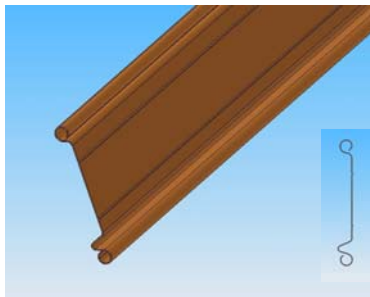
Art. Code	Invoice Code
P8GW	71.320.00.00015
P10GW	71.320.00.00017



Linear profile by galvanized sheet metal and openings for windows 130X70 with intermediary distance 50 or 100 mm  
 Profile step: 110 mm  
 Thickness: 0,8 1,0 mm  
 Weight: 1,15 1,44 Kg/m  
 Max. length : until 10 m

### PROFILE PASTORE DYED

Art. Code	Invoice Code
P8P	71.320.00.00022
P10P	71.320.00.00024

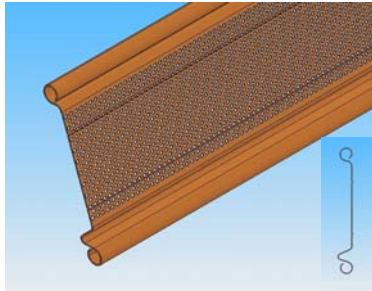


Linear profile by galvanized sheet metal, electrostatic dyed  
 Profile step: 110 mm  
 Thickness: 0,8 1,0 mm  
 Weight: 1,15 1,44 Kg/m  
 Max. length : until 10 m  
 Electrostatic dye RAL tints:

RAL 1013	RAL 3000	RAL 5010	RAL 6005
RAL 735D	RAL 8017	RAL 9002	RAL 9016

**PROFILE PASTORE DYED PERFORATED**

Art. Code	Invoice Code
P8PP	71.320.00.00027
P10PP	71.320.00.00029

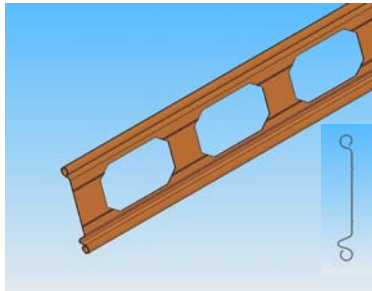


Linear profile by galvanized perforated sheet metal, electrostatic dyed  
 Profile step: 110 mm  
 Thickness: 0,8 1,0 mm  
 Weight: 0,99 1,22 Kg/m  
 Max. length : until 10 m  
 Electrostatic dye RAL tints:

RAL 1013	RAL 3000	RAL 5010	RAL 6005
RAL 735D	RAL 8017	RAL 9002	RAL 9016

**PROFILE PASTORE DYED WITH WINDOWS**

Art. Code	Invoice Code
P8PW	71.320.00.00034
P10PW	71.320.00.00036

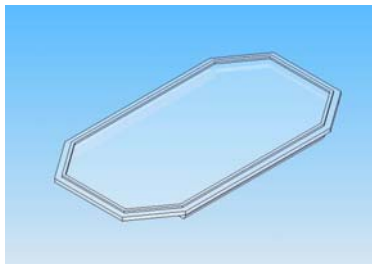


Linear profile by galvanized sheet metal, electrostatic dyed and openings for windows 130X70 with intermediary distance 50 or 100 mm  
 Profile step: 110 mm  
 Thickness: 0,8 1,0 mm  
 Weight: 1,15 1,44 Kg/m  
 Max. length : until 10 m

RAL 1013	RAL 3000	RAL 5010	RAL 6005
RAL 735D	RAL 8017	RAL 9002	RAL 9016

**POLYCARBONATE WINDOW FOR PASTORE 130X70 mm**

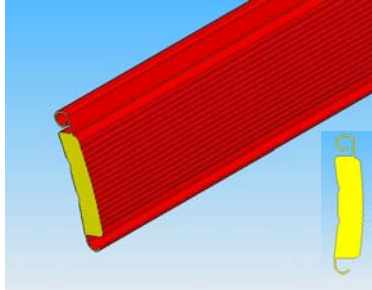
Art. Code	Invoice Code
W13070	24.800.13.00029



### 3 DOUBLE PROFILE WITH INSULATION

#### DOUBLE SHEET-METAL PROFILE WITH POLYURETHANE INSULATION (GALVANIZE SHEET-METAL PLASTICIZATION RAL TINTS)

Art. Code            Invoice Code  
CB1RAL...        71.320.00.00082

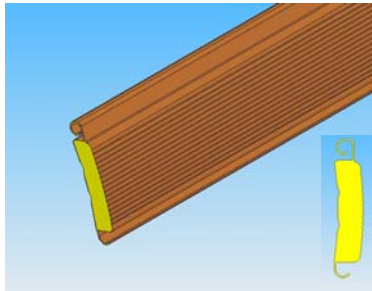


Double wall profile by galvanized sheet metal, thickness 0,4 mm, plasticization RAL tints and polyurethane insulation  
Profile step: 90 mm  
Profile Thickness: 18 mm  
Weight: 1,0 Kg/m  
Max. length : until 10 m

RAL 1013	RAL 3000	RAL 5010	RAL 6005
RAL 735D	RAL 8017	RAL 9002	RAL 9016

#### DOUBLE SHEET-METAL PROFILE WITH POLYURETHANE INSULATION (GALVANIZE SHEET-METAL PLASTICIZATION WOOD IMITATION)

Art. Code            Invoice Code  
CB1WD..        71.320.00.00084

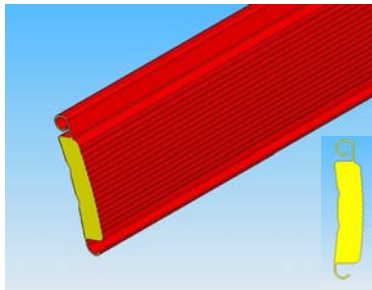


Double wall profile by galvanized sheet metal, thickness 0,4 mm, plasticization wood imitation and polyurethane insulation  
Profile step: 90 mm  
Profile Thickness: 18 mm  
Weight: 1,0 Kg/m  
Max. length : until 10 m



#### DOUBLE ALUMINIUM PROFILE WITH POLYURETHANE INSULATION (ALUMINIUM SHEET DYED IN RAL TINTS)

Art. Code            Invoice Code  
CB2RAL...        71.320.00.00073



Double wall profile by aluminium sheet, thickness 0,4 mm, plasticization RAL tints and polyurethane insulation  
Profile step: 90 mm  
Profile Thickness: 18 mm  
Weight: 0,43 Kg/m  
Max. length : until 10 m

RAL 1013	RAL 3000	RAL 5010	RAL 6005
RAL 735D	RAL 8017	RAL 9002	RAL 9016

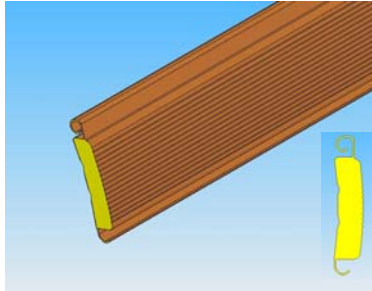
**DOUBLE ALUMINIUM PROFILE WITH POLYURETHANE INSULATION  
(ALUMINIUM SHEET PLASTICIZATION WOOD IMITATION)**

Art. Code

Invoice Code

CB2WD..

71.320.00.00074



Double wall profile by aluminium sheet, thickness 0,4 mm,  
plasticization wood imitation and polyurethane insulation  
Profile step: 90 mm  
Πάχος προφιλ: 18 mm  
Weight: 0,43 Kg/m  
Max. length : until 10 m

Light



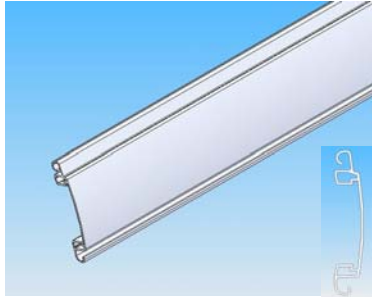
Dark



## 4 ALUMINIUM PROFILE

### ALUMINIUM PROFILE

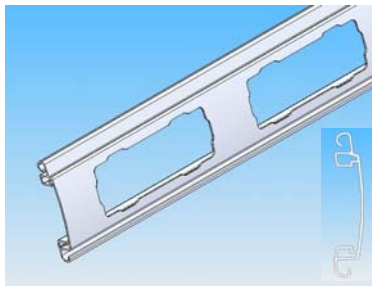
Art. Code	Invoice Code
ES1N	24.700.70.00041
ES1P	24.700.70.00055
ES1A	24.700.70.00043



Aluminium profile (for lock placement)  
Natural (ES1N) or White (ES1P) or Anodize (ES1A)  
Weight: 1,0 Kg/m  
Length : 6 m

### ALUMINIUM PROFILE WITH WINDOWS

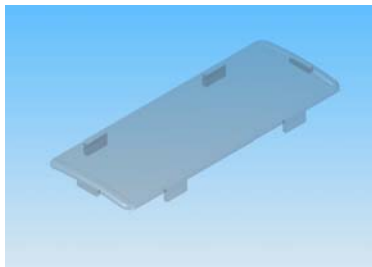
Art. Code	Invoice Code
ES1NW	71.320.00.00067
ES1PW	71.320.00.00068
ES1AW	71.320.00.00069



Aluminium profile with openings for windows  
150X60 mm with intermediary distance 50 or 100 mm  
Natural (ES1NW) or White (ES1PW) or Anodize (ES1AW)  
Weight: 1,0 Kg/m  
Length : 6 m

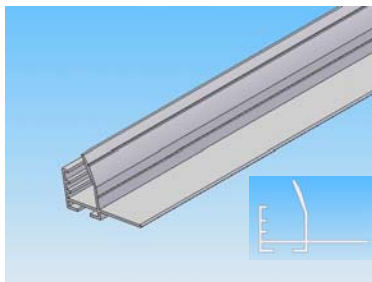
### POLYCARBONATE WINDOW FOR ALUMINIUM PROFILE 150X60 mm

Art. Code	Invoice Code
W15060	24.800.13.00028



### END ALUMINIUM PROFILE

Art. Code	Invoice Code
G4N	24.700.70.00044
G4P	24.700.70.00051
G4A	24.700.70.00046



End aluminium profile with socket for rubber  
Natural (G4N) or Black (G4P) or Anodize (G4A)  
Weight: 0,57 Kg/m  
Length : 6 m

**ALUMINIUM STRUT**

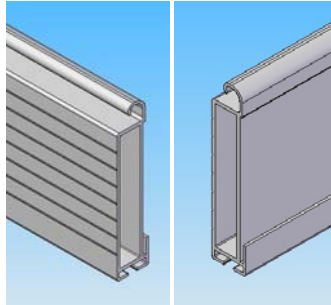
Art. Code	Invoice Code
G3N	24.700.70.00005
G3P	24.700.70.00006
G3A	24.700.70.00007

**ABOLISHED**

Aluminium strut  
Natural (G3N) or Black (G3P) or Anodize (G3A)  
Weight: 0,57 Kg/m  
Length: 6 m

**END ALUMINIUM PROFILE WITH SOCKET FOR RUBBER AND STRUT**

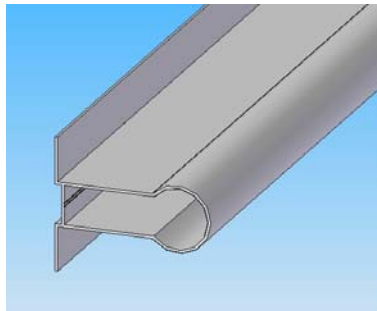
Art. Code	Invoice Code
355016	24.700.70.00056



End aluminium profile with socket for  
rubber and strut  
Weight: 1,02 kg /m  
Length: 6 m

**ALUMINIUM STRUT**

Art. Code	Invoice Code
355015	24.700.70.00054

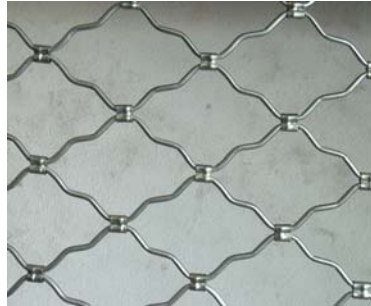


Aluminium strut  
Weight: 0,7 kg /m  
Length: 6 m

## 5 RETICULAR ROLES

### RETICULAR ROLE THIN GALVANIZE

Art. Code      Invoice Code  
**NBG**          71.300.12.00004



Reticular role "Big eye" 170 X 115 mm  
 by galvanize wire  $\Phi$ 8  
 Weight: 8,0 Kg/m<sup>2</sup>

### RETICULAR ROLE DENSE GALVANIZE

Art. Code      Invoice Code  
**NSG**          71.300.12.00002



Reticular role "Small eye" 70X45 mm  
 by galvanize wire  $\Phi$ 8  
 Weight: 17,5 Kg/m<sup>2</sup>

### RETICULAR ROLE THIN DYED

Art. Code      Invoice Code  
**NBP**          71.300.12.00003



Reticular role "Big eye" 170 X 115 mm  
 by galvanize wire  $\Phi$ 8, electrostatic dyed in RAL tints  
 Weight: 8,0 Kg/m<sup>2</sup>

RAL 1013	RAL 3000	RAL 5010	RAL 6005
RAL 735D	RAL 8017	RAL 9002	RAL 9016

### RETICULAR ROLE DENSE DYED

Art. Code      Invoice Code  
**NSP**          71.300.12.00001

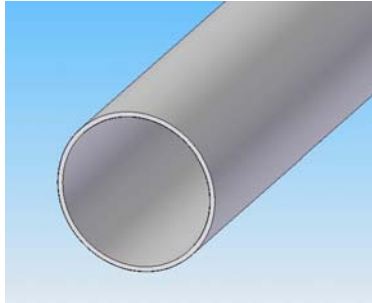


Reticular role "Small eye" 70X45 mm  
 by galvanize wire  $\Phi$ 8, electrostatic dyed in RAL tints  
 Weight: 17,5 Kg/m<sup>2</sup>

RAL 1013	RAL 3000	RAL 5010	RAL 6005
RAL 735D	RAL 8017	RAL 9002	RAL 9016

**6 SHAFTS****SHAFTS**

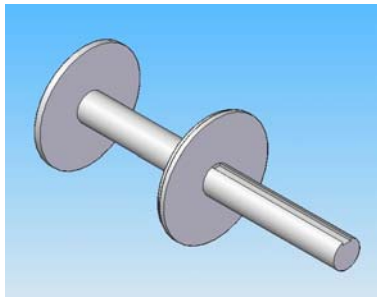
Art. Code	Invoice Code
BB-60	24.700.40.00034
BB-76	24.700.40.00037
BB-159	24.700.40.00178
BB-169	24.700.40.00179
BB-192	24.700.40.00180
BB-202	24.700.40.00181



Shafts  $\Phi 60$  &  $\Phi 76$  galvanize  
Shafts  $\Phi 159$ ,  $\Phi 169$ ,  $\Phi 192$  &  $\Phi 202$  dyed

**SIDE SHAFT WITH FLANGE**

Art. Code	Invoice Code
BB-40-159	71.800.15.00001
BB-40-169	71.800.15.00002
BB-40-192	71.800.15.00003
BB-40-202	71.800.15.00004



For shafts  $\Phi 159$ ,  $\Phi 169$ ,  $\Phi 192$  &  $\Phi 202$   
Shaft:  $\Phi 40$  ( or  $\Phi 50$  mm for  $\Phi 202$ )  
Length: 400 mm  
Weight: 6,5 kg

**7 SPRINGS-SPRING BOXES**

**SPRINGS**

Art. Code	Invoice Code
SP6014	24.700.61.00006
SP5514	24.700.61.00005
SP5014	24.700.61.00004
SP4514	24.700.61.00003
SP4014	24.700.61.00002
SP4012	24.700.61.00001



Width: 60 55 50 45 40 40 mm  
 Thickness: 1,4 1,4 1,4 1,4 1,4 1,2 mm

**SPRING BOXES**

Art. Code	Invoice Code
SPB200E	24.700.20.00006
SPB220N	24.700.20.00017
SPB220S	24.700.20.00009
SPB240S	24.700.20.00010



Φ220 - Simple rollers  
 Φ220 - Nylon rollers  
 Φ220 - Solid rollers  
 Φ240 - Solid rollers

## 8 GUIDES-FLAGS

### GUIDE SIMPLE GALVANIZE

Art. Code	Invoice Code
G40SG	71.800.50.00001
G60SG	71.800.50.00003



Nominal dimension: 40 or 60 mm  
Thickness: 2 mm

### GUIDE GALVANIZE

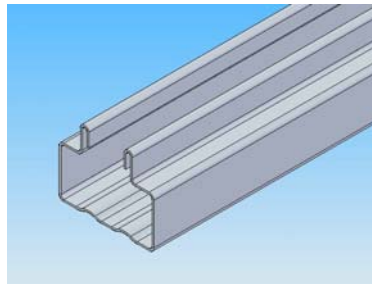
Art. Code	Invoice Code
G60G	71.800.50.00005
G80G	71.800.50.00007
G100G	71.800.50.00009
G120G	71.800.50.00028



Nominal dimension: 60, 80, 100, 120 mm  
Thickness: 2 mm

### GUIDE NEW GALVANIZE

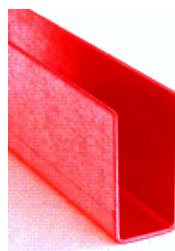
Art. Code	Invoice Code
G70NG	71.800.50.00011
G110NG	71.800.50.00031



Nominal dimension: 70, 110 mm  
Thickness: 1,5 mm

### GUIDE SIMPLE DYED

Art. Code	Invoice Code
G40SP	71.800.50.00002
G60SP	71.800.50.00004

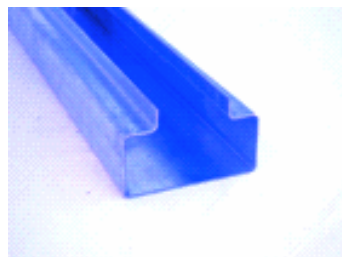


Nominal dimension: 40 ÷ 60 mm  
Thickness: 2 mm

RAL 1013	RAL 3000	RAL 5010	RAL 6005
RAL 735D	RAL 8017	RAL 9002	RAL 9016

### GUIDE DYED

Art. Code	Invoice Code
G60P	71.800.50.00006
G80P	71.800.50.00008
G100P	71.800.50.00010
G120P	71.800.50.00026

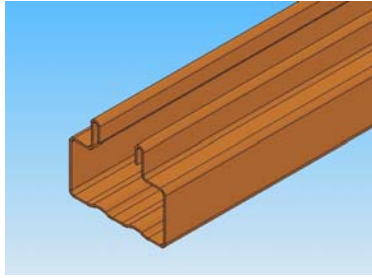


Nominal dimension: 60, 80, 100, 120 mm  
Thickness: 2 mm

RAL 1013	RAL 3000	RAL 5010	RAL 6005
RAL 735D	RAL 8017	RAL 9002	RAL 9016

**GUIDE NEW DYED**

Art. Code	Invoice Code
G70NP	71.800.50.00012
G110NP	71.800.50.00032



Nominal dimension: 60, 80, 100, 120 mm  
Thickness: 2 mm

RAL 1013	RAL 3000	RAL 5010	RAL 6005
RAL 735D	RAL 8017	RAL 9002	RAL 9016

**FLAGS GALVANIZE**

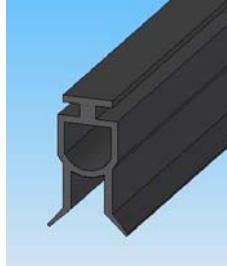
Art. Code	Invoice Code
FL35G	71.800.50.00018
FL40G	71.800.50.00020
FL45G	71.800.50.00022
FL40GIND	71.800.50.00023
FL45GIND	71.800.50.00024
FL50GIND	71.800.50.00025



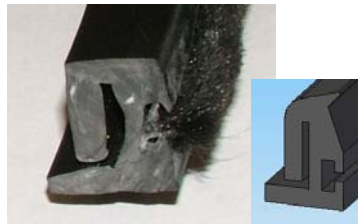
Dimensions: 350X350, 400X400, 450X450, 500X500  
Thickness: 3 mm

**9 RABBERS- PLASTIC****END RUBBER OF ROLE**

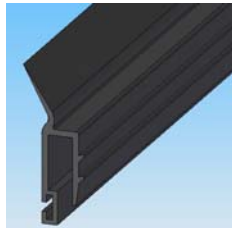
Art. Code	Invoice Code
TR376	24.800.40.00019
TR708	24.800.40.00020

**RUBBER WITH BRUSH**

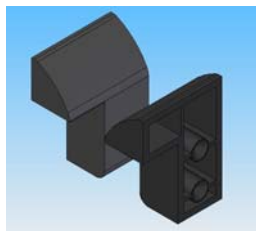
Art. Code	Invoice Code
SPZ1	24.800.40.00021

**RUBBER OF NEW GUIDE WITH BRUSH**

Art. Code	Invoice Code
G0007	24.800.40.00002

**SLIDES OF GUIDES**

Art. Code	Invoice Code
IN11	24.800.13.00034



Pair (Left and Right)

**PLASTIC END CUPS FOR ANTINTEBESTA**

Art. Code	Invoice Code
TL12A	24.800.13.00030



Pair (Left and Right)

***PLASTIC END CUPS FOR PASTORE***

Art. Code            Invoice Code  
TL12P                24.800.13.00031



Pair (Left and Right)

***PLASTIC END CUPS FOR DOUBLE WITH INSULATION***

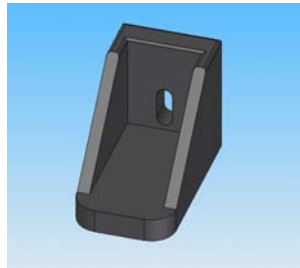
Art. Code            Invoice Code  
TL12D                24.800.13.00032



Pair (Left and Right)

***PLASTIC STOP***

Art. Code            Invoice Code  
FR16                 24.800.13.00033

***HANDLE FOR PASTORE***

Art. Code            Invoice Code  
MSP32                24.800.13.00010

***HANDLE***

Art. Code            Invoice Code  
MSP33                24.800.13.00009



***PLASTIC RING FOR SPRING BOX***

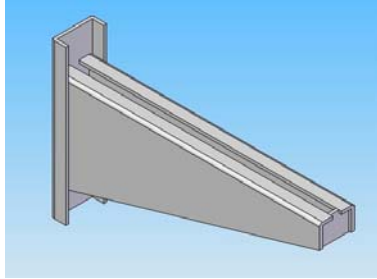
Art. Code	Invoice Code
RB200	24.700.20.00011
RB220	24.700.20.00012
RB240	24.700.20.00013



For spring boxes  $\Phi$ 200,  $\Phi$ 220,  $\Phi$ 240

**10 SUPPORT-GALVANIZE ELEMENTS-LOCKS****REDUCTION SUPPORT**

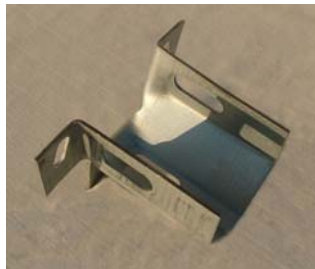
Art. Code	Invoice Code
SUPR15	24.800.13.00005
SUPR17	24.800.13.00006



Thickness: 4,0 mm  
Distance of centre: 435 mm (regulated)  
Weight: 5,4 kg  
For reduction 1:5 or 1:7

**SHAFT  $\Phi 60$ - $\Phi 75$  SUPPORT**

Art. Code	Invoice Code
SUPS	71.800.13.00024



Thickness: 2,5 mm

**REGULAR STRAP FOR ANTINTEBESTA AND PASTORE**

Art. Code	Invoice Code
BEIN	24.800.13.00016



Thickness: 1,5 mm

**REVERSE STRAP FOR ANTINTEBESTA AND PASTORE**

Art. Code	Invoice Code
BEOUT	24.800.13.00017



Thickness: 1,5 mm

**ANGLE STRUT FOR ANTINTEBESTA AND PASTORE**

Art. Code	Invoice Code
ANG40G	71.700.70.00001



Thickness: 2 mm

**SIDELONG LOCK**

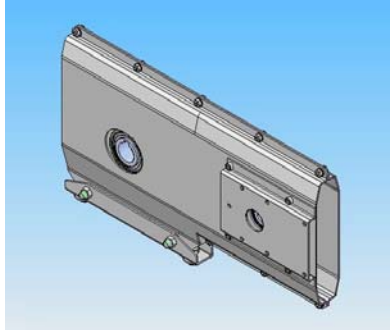
Art. Code	Invoice Code
SIDLCK	24.800.13.00011



Pair

**11 REDUCTIONS-SAFETY BRAKES-CHAIN HOIST****REDUCTIONS**

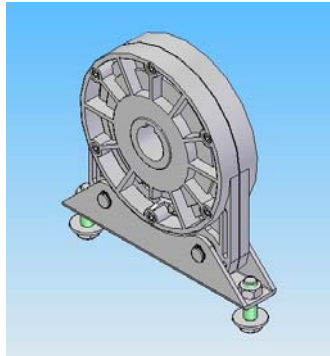
Art. Code	Invoice Code
REDU15	20.800.13.00021
REDU17	20.800.13.00022



Reductions: 1:5 or 1:7  
Weight: 23,2 Kg

**SAFETY BREAK GAPOSA M7A**

Art. Code	Invoice Code
SDM7A	24.800.13.00001



Centrifugal safety break  
Weight: 9,0 Kg

**SAFETY BREAK ELSAMEC F5**

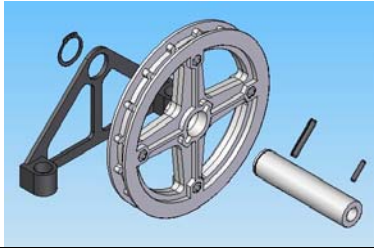
Art. Code	Invoice Code
SDF5	24.800.13.00004



Centrifugal safety break  
Weight: 5,6 Kg

**CHAIN HOIST FOR ELSAMEC**

Art. Code	Invoice Code
724ELS	24.800.12.00114



Shaft diameter: 25 mm  
Weight: 1,5 kg

**CHAIN FOR CHAIN HOIST**

Art. Code	Invoice Code
723AELS	24.800.12.00139



Weight: 0,5 kg/m

**CRANK OF MOTOR ELSAMEC**

Art. Code	Invoice Code
MELS	24.800.13.00014



**12. MOTORS****MOTOR TITAN 220SE ACM**

Art. Code	Invoice Code
M22SEACM	20.100.10.00016



Pull force: 150 Kg  
External diameter: 220 mm  
Internal diameter: 60 mm

**MOTOR TITAN 240E ACM**

Art. Code	Invoice Code
M24EACM	20.100.10.00008



Pull force: 180 Kg  
External diameter: 240 mm  
Internal diameter: 76 mm

**MOTOR TITAN 240BM ACM**

Art. Code	Invoice Code
M24BMACM	20.100.10.00007



Reduction with two motors  
Pull force: 360 Kg  
External diameter: 240 mm  
Internal diameter: 76 mm

**MOTOR SOMFI**

Art. Code	Invoice Code
M22SOMFI	20.100.10.00001



Pull force: 100 Kg  
External diameter: 220 mm  
Internal diameter: 60 mm

**MOTOR CEM 220**

Art. Code	Invoice Code
M22CEM	20.100.10.00019



Pull force: 150 Kg  
External diameter: 220 mm  
Internal diameter: 60 mm

**MOTOR CEM 240**

Art. Code	Invoice Code
M24CEM	20.100.10.00020



Pull force: 180 Kg  
External diameter: 240 mm  
Internal diameter: 76 mm

**MOTOR CEM 240BM**

Art. Code	Invoice Code
M24BMCEM	20.100.10.00021



Ηλεκτρομειωτήρας με δύο κινητήρες  
Pull force: 360 Kg  
External diameter: 240 mm  
Internal diameter: 76 mm

**MOTOR ELSAMEC SINGLE-PHASE (Taurus 6)**

Art. Code	Invoice Code
MT6ELS	20.100.11.00004



890W – 230V – 50Hz

**MOTOR ELSAMEC THREE-PHASE (Taurus 12)**

Art. Code	Invoice Code
MT12ELS	20.100.11.00005



1100W – ~3 400V – 50Hz

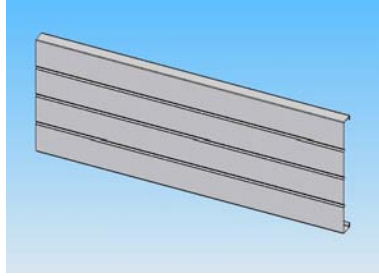
**13 BOXES****MIRROR**

Art. Code

MIRR

Invoice Code

71.800.70.00001



Dimensions and constructional details by agreement

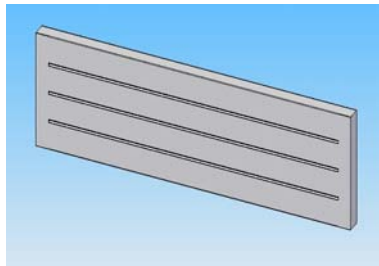
**FRAME**

Art. Code

MIRFR

Invoice Code

71.800.70.00002



Dimensions and constructional details by agreement

**COVER FRAME (IN WOOD IMITATION)**

Art. Code

MIRWD

Invoice Code

71.800.70.00002



Dimensions and constructional details by agreement

## 14 SCREWS-NUTS



Art. Code	Invoice Code	Description
11211B	25.800.30.00093	FLAT HEAD GALVANIZE BOLT M12X110 FOR SHAFT
11010B	25.800.30.00030	FLAT HEAD GALVANIZE BOLT M10X100 FOR SHAFT $\Phi$ 60
11012B	25.800.30.00105	FLAT HEAD GALVANIZE BOLT M10X120 FOR SHAFT $\Phi$ 75
11003B	25.800.30.00029	FLAT HEAD GALVANIZE BOLT M10X25 FIXING SUPPORT DIN603
1062B	25.800.30.00019	FLAT HEAD GALVANIZE BOLT M6X16 FOR STRUT
1062BL	25.800.30.00100	FLAT HEAD BOLT M6X16 FOR HANDLE
1063B	25.800.30.00023	FLAT HEAD GALVANIZE BOLT M6X25 FOR LOCK & STOP
1065B	25.800.30.00024	FLAT HEAD GALVANIZE BOLT M6X50 FOR RETICULAR STOP 60X30
1066B	25.800.30.00025	FLAT HEAD GALVANIZE BOLT M6X60 FOR RETICULAR STOP 80X40
1085B	25.800.30.00011	ALLEN BOLT M8X50 FOR DOUBLE WITH INSULATION HANDLE
1100M	25.800.30.00055	NUT M10X1,5 GALVANIZE
1060M	25.800.30.00052	NUT M6X1,0 GALVANIZE
1100RW	25.800.30.00076	WASHER M10 DIN9021 GALVANIZE
1120R	25.800.30.00078	WASHER M12 DIN125 GALVANIZE
412PR	25.800.30.00081	RIVET 4X12 FOR ANTINTEBESTA & PASTORE PLASTIC END CUPS

**15 CONTROL PANELS*****CONTROL UNIT ROLLING CODE V2 EASY***

Art. Code	Invoice Code
EASY-RI	20.200.10.00033

***CONTROL UNIT BENINCA DREAM***

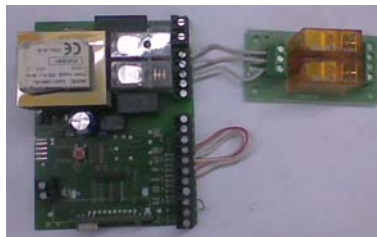
Art. Code	Invoice Code
DREAM	20.200.10.00024

***CONTROL UNIT THREE-PHASE MOTOR ELSAMEC***

Art. Code	Invoice Code
CU-ELS	20.200.10.00030

***CONTROL UNIT FOR REMOTE CONTROLLED INDUSTRIAL MOTORS***

Art. Code	Invoice Code
CU-TR	20.200.10.00048

***CONTROL UNIT FOR SAFETY EDGE IN CONDUCTIVE***

Art. Code	Invoice Code
SCE	24.800.10.00011



**16 TRANSMITTERS-SWITCHES-ANTENNA****4 CHANNELS ROLLING CODE TRANSMITTER V2**

Art. Code	Invoice Code
TRR4/43	20.200.11.00002

**2 CHANNELS TRANSMITTER V2**

Art. Code	Invoice Code
TRR2/43	20.200.11.00003

**EXTERNAL METAL SWITCH WITH KEY ACM (BIOROL)**

Art. Code	Invoice Code
SWKEY	20.200.12.00004

**SIMPLE SWITCH NORATEX**

Art. Code	Invoice Code
SWNOR3	20.200.12.00001



**RELEASE BOX ACM & GAPOSA**

Art. Code

Invoice Code

**ANTENNA V2**

Art. Code

Invoice Code



**17 PHOTOCELLS-SAFETY EDGES****PHOTOCELLS V2**

Art. Code	Invoice Code
V2DFN	20.200.14.00002

**SYSTEM MOVED PHOTOCELLS**

Art. Code	Invoice Code
FPM1	20.200.14.00011

**PNEUMATIC SAFETY EDGE**

Art. Code	Invoice Code
SCP35	24.800.40.00026

**PRESSURE SWITCH FOR PNEUMATIC SAFETY EDGE**

Art. Code	Invoice Code
SCPP	24.800.10.00012



***SAFETY EDGE IN CONDUCTIVE***

Art. Code

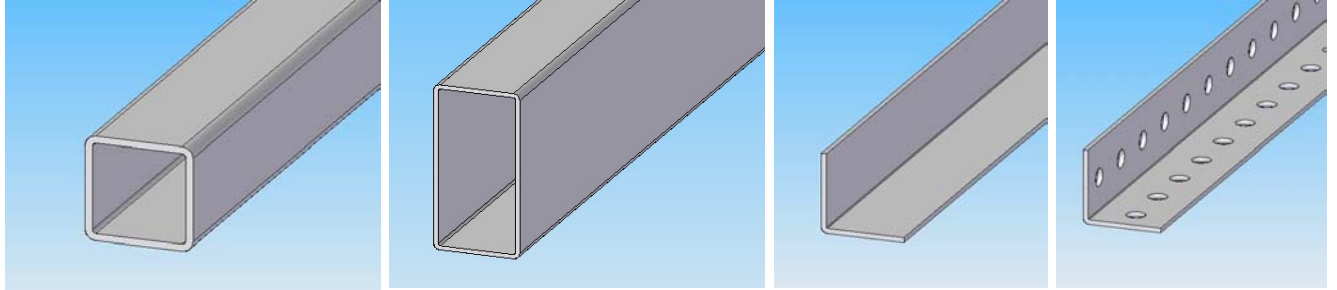
Invoice Code

SCRES

24.800.40.00024



## 18 HOLLOW SECTION-ANGLES



Art. Code	Invoice Code	Description
G30-30-2	24.700.40.00079	HOLLOW SECTION 30X30X2 GALVANIZE
G40-40-2	24.700.40.00084	HOLLOW SECTION 40X40X2 GALVANIZE
G50-50-2	24.700.40.00086	HOLLOW SECTION 50X50X2 GALVANIZE
G60-40-2	24.700.40.00090	HOLLOW SECTION 60X40X2 GALVANIZE
G60-50-3	24.700.40.00089	HOLLOW SECTION 60X50X3 GALVANIZE
G60-60-2	24.700.40.00092	HOLLOW SECTION 60X60X2 GALVANIZE
G60-60-3	24.700.40.00093	HOLLOW SECTION 60X60X3 GALVANIZE
G80-40-2	24.700.40.00097	HOLLOW SECTION 80X40X2 GALVANIZE
G80-40-3	24.700.40.00098	HOLLOW SECTION 80X40X3 GALVANIZE
G100-40-2	24.700.40.00102	HOLLOW SECTION 100X40X2 GALVANIZE
G100-40-3	24.700.40.00103	HOLLOW SECTION 100X40X3 GALVANIZE
G100-60-3	24.700.40.00105	HOLLOW SECTION 100X60X3 GALVANIZE
G120-40-2	24.700.40.00109	HOLLOW SECTION 120X40X2 GALVANIZE
G120-60-3	24.700.40.00110	HOLLOW SECTION 120X60X3 GALVANIZE
ANG40G	71.700.70.00001	ANGLE 40X40X2,5 GALVANIZE
ANG40GP	71.700.70.00003	ANGLE 40X40X2,5 GALVANIZE PERFORATED